



LRRC41 Antibody

E11-16455C**Catalog Number:** E11-16455C**Concentration:** 1mg/ml, 100ug/100uL**Swiss-Prot No.:** Q15345**Other Names:** Leucine-rich repeat-containing protein 41, Protein Muf1**Storage/Stability:** Store at -20°C/1 year**Form of Antibody:** Rabbit IgG in phosphate buffered saline (without Mg^{2+} and Ca^{2+}), pH 7.4, 150mM NaCl, 0.02% sodium azide and 50% glycerol.**Immunogen:** The antiserum was produced against synthesized peptide derived from internal of human LRRC41.**Purification:** The antibody was affinity-purified from

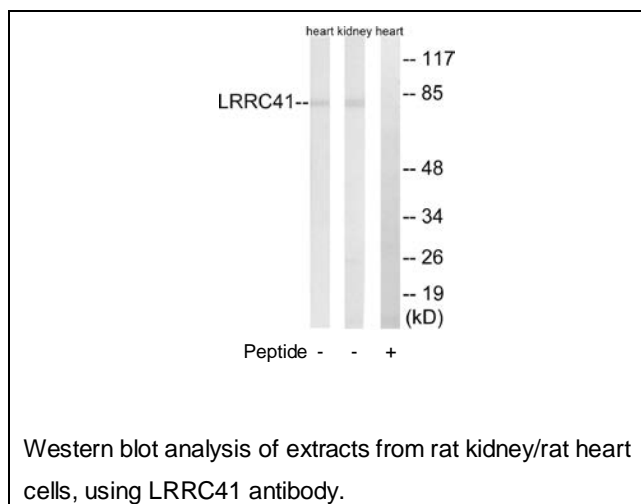
rabbit antiserum by affinity-chromatography using epitope-specific immunogen.

Specificity: LRRC41 antibody detects endogenous levels of total LRRC41 protein.**Reactivity:** Human (Identities = 100%, Positives = 100%);
Mouse (Identities = 100%, Positives = 100%);
Rat (Identities = 100%, Positives = 100%)**Applications:** WB: 1:500~1:1000 ELISA: 1:5000**References:**

Gregory S.G., Nature 441:315-321(2006).

The MGC Project Team, Genome Res. 14:2121-2127(2004).

Bechtel S., BMC Genomics 8:399-399(2007).

**For Research Use Only**