



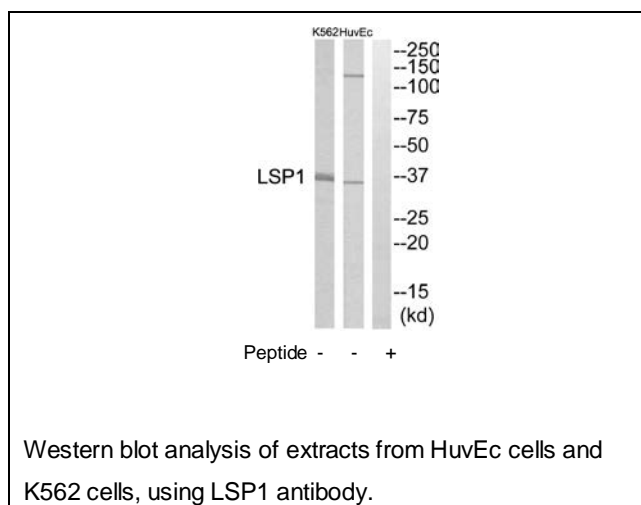
LSP1 Antibody

E11-16525C**Catalog Number:** E11-16525C**Concentration:** 1mg/ml, 100ug/100uL**Swiss-Prot No.:** P33241**Other Names:** Lymphocyte-specific protein 1; Protein pp52; 52 kDa phosphoprotein; Lymphocyte-specific antigen WP34; 47 kDa actin-binding protein**Storage/Stability:** Store at -20°C/1 year**Form of Antibody:** Rabbit IgG in phosphate buffered saline (without Mg^{2+} and Ca^{2+}), pH 7.4, 150mM NaCl, 0.02% sodium azide and 50% glycerol.**Immunogen:** The antiserum was produced against synthesized peptide derived from internal of human LSP1.**Purification:** The antibody was affinity-purified from rabbit antiserum by affinity-chromatography using epitope-specific immunogen.**Specificity:** LSP1 antibody detects endogenous levels of total LSP1 protein.**Reactivity:** Human (Identities = 100%, Positives = 100%)**Applications:** WB: 1:500~1:1000 ELISA: 1:5000**References:**

Jongstra-Bilen J., J. Immunol. 144:1104-1110(1990).

Kadiyala R.K., Eur. J. Immunol. 20:2417-2423(1990).

Howard T., Blood 83:231-241(1994).

**For Research Use Only**