



MRPS22 Antibody

E11-16654C

Catalog Number: E11-16654C

Concentration: 1mg/ml, 100ug/100uL

Swiss-Prot No.: P82650

Other Names: mitochondrial 28S ribosomal protein S22;

MRP-S22; RPMS22; RT22; S22mt

Storage/Stability: Store at -20°C/1 year

Form of Antibody: Rabbit IgG in phosphate buffered saline (without Mg^{2+} and Ca^{2+}), pH 7.4, 150mM NaCl, 0.02% sodium azide and 50% glycerol.

Immunogen: The antiserum was produced against synthesized peptide derived from internal of human MRPS22.

Purification: The antibody was affinity-purified from

rabbit antiserum by affinity-chromatography using epitope-specific immunogen.

Specificity: MRPS22 antibody detects endogenous levels of total MRPS22 protein.

Reactivity: Human

Applications: WB: 1:500~1:1000 IF: 1:100~1:500

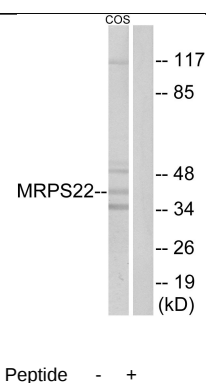
ELISA: 1:40000

References:

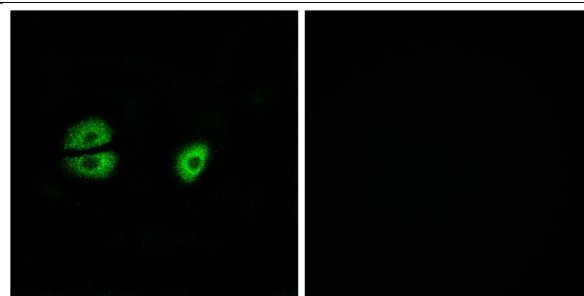
[Crisponi L.](#), Nat. Genet. 27:159-166(2001).

[Li Y.](#), Submitted (JAN-2000) to the EMBL/GenBank/DBJ databases.

The MGC Project Team; [Genome Res.](#) 14:2121-2127(2004).



Western blot analysis of extracts from COS cells, using MRPS22 antibody.



Immunofluorescence analysis of A549 cells, using MRPS22 antibody.

For Research Use Only