



MRPL39 Antibody

E11-16672C

Catalog Number: E11-16672C

Concentration: 1mg/ml, 100ug/100uL

Swiss-Prot No.: Q9NYK5

Other Names: L39mt; MRP-L39; MRP-L5; RM39

Storage/Stability: Store at -20°C/1 year

Form of Antibody: Rabbit IgG in phosphate buffered saline (without Mg^{2+} and Ca^{2+}), pH 7.4, 150mM NaCl, 0.02% sodium azide and 50% glycerol.

Immunogen: The antiserum was produced against synthesized peptide derived from internal of human MRPL39.

Purification: The antibody was affinity-purified from

rabbit antiserum by affinity-chromatography using epitope-specific immunogen.

Specificity: MRPL39 antibody detects endogenous levels of total MRPL39 protein.

Reactivity: Human, Mouse

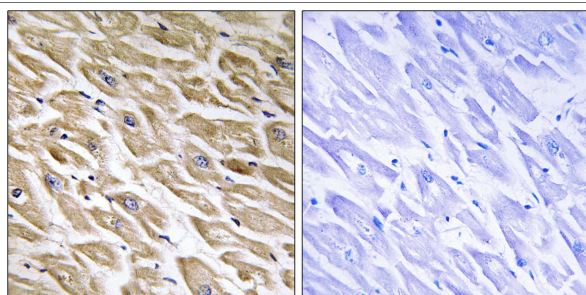
Applications: WB: 1:500~1:1000 IHC: 1:50~1:100
ELISA: 1:40000

References:

Choi D.K., Submitted (FEB-2000) to the EMBL/GenBank/DDBJ databases.

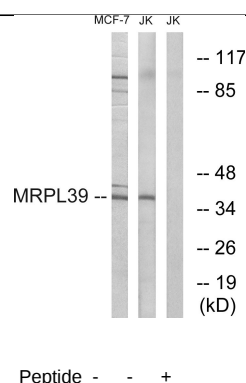
Ota T., Nat. Genet. 36:40-45(2004).

Spirina O., Gene 261:229-234(2000).



Peptide - +

Immunohistochemistry analysis of paraffin-embedded human heart tissue using MRPL39 antibody.



Peptide - - +

Western blot analysis of extracts from MCF-7 cells and Jurkat cells, using MRPL39 antibody.

For Research Use Only