



## MRPL50 Antibody

E11-16675C

**Catalog Number:** E11-16675C

**Concentration:** 1mg/ml, 100ug/100uL

**Swiss-Prot No.:** Q8N5N7

**Other Names:** flj20493; flj21990; mitochondrial ribosomal protein l50; mrp-l50; mrpl50; rm50

**Storage/Stability:** Store at -20°C/1 year

**Form of Antibody:** Rabbit IgG in phosphate buffered saline (without Mg<sup>2+</sup> and Ca<sup>2+</sup>), pH 7.4, 150mM NaCl, 0.02% sodium azide and 50% glycerol.

**Immunogen:** The antiserum was produced against synthesized peptide derived from internal of human MRPL50.

**Purification:** The antibody was affinity-purified from rabbit antiserum by affinity-chromatography using epitope-specific immunogen.

**Specificity:** MRPL50 antibody detects endogenous levels of total MRPL50 protein.

**Reactivity:** Human

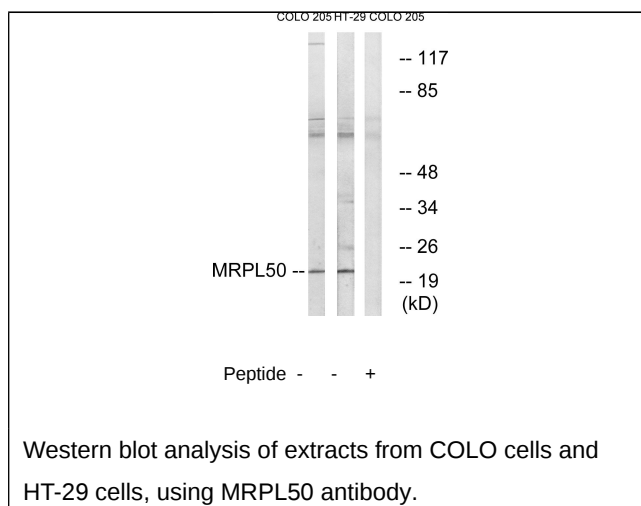
**Applications:** WB: 1:500~1:1000 ELISA: 1:20000

**References:**

[Ota T.](#), Nat. Genet. 36:40-45(2004).

[Humphray S.J.](#), Nature 429:369-374(2004).

The MGC Project Team; [Genome Res. 14:2121-2127\(2004\)](#).



**For Research Use Only**