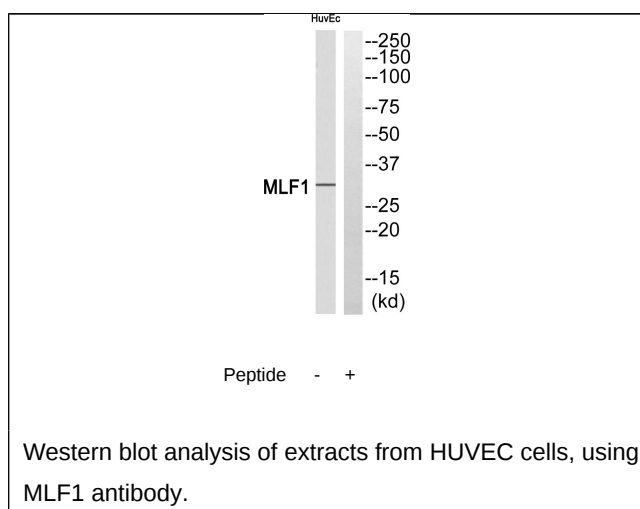




MLF1 Antibody

E11-16750C**Catalog Number:** E11-16750C**Concentration:** 1mg/ml, 100ug/100uL**Swiss-Prot No.:** P58340**Other Names:** Myeloid leukemia factor 1,
Myelodysplasia-myeloid leukemia factor 1**Storage/Stability:** Store at -20°C/1 year**Form of Antibody:** Rabbit IgG in phosphate buffered
saline (without Mg^{2+} and Ca^{2+}), pH 7.4, 150mM NaCl,
0.02% sodium azide and 50% glycerol.**Immunogen:** The antiserum was produced against
synthesized peptide derived from internal of human
MLF1.**Purification:** The antibody was affinity-purified from
rabbit antiserum by affinity-chromatography using
epitope-specific immunogen.**Specificity:** MLF1 antibody detects endogenous levels of
total MLF1 protein.**Reactivity:** Human, Mouse**Applications:** WB: 1:500~1:1000 ELISA: 1:20000**References:**

Yoneda-Kato N., Oncogene 12:265-275(1996) [PubMed:
8570204]. Hanissian S.H., Oncogene 23:3700-3707(2004)
[PubMed: 15116101]. Yoneda-Kato N., EMBO J.
24:1739-1749(2005) [PubMed: 15861129].

**For Research Use Only**