



## NARFL Antibody

**E11-17104C****Catalog Number:** E11-17104C**Concentration:** 1mg/ml, 100ug/100uL**Swiss-Prot No.:** Q9H6Q4**Other Names:** FLJ21988; Nuclear prelamin A recognition factor-like; PRN; Protein related to Narf**Storage/Stability:** Store at -20°C/1 year**Form of Antibody:** Rabbit IgG in phosphate buffered saline (without  $Mg^{2+}$  and  $Ca^{2+}$ ), pH 7.4, 150mM NaCl, 0.02% sodium azide and 50% glycerol.**Immunogen:** The antiserum was produced against synthesized peptide derived from internal of human NARFL.**Purification:** The antibody was affinity-purified from

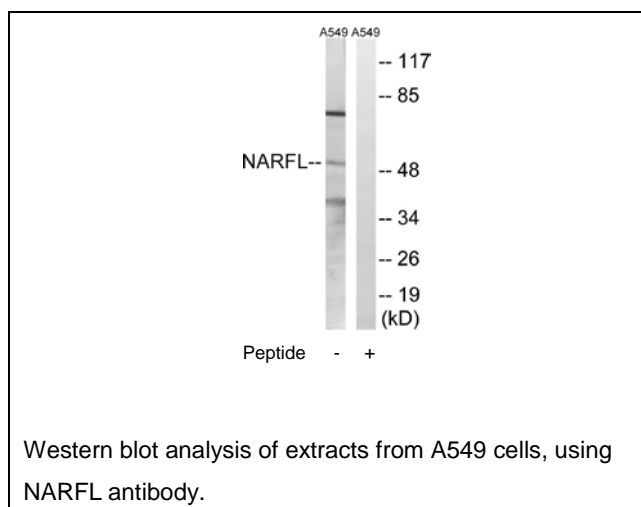
rabbit antiserum by affinity-chromatography using epitope-specific immunogen.

**Specificity:** NARFL antibody detects endogenous levels of total NARFL protein.**Reactivity:** Human (Identities = 100%, Positives = 100%)**Applications:** WB: 1:500~1:1000 ELISA: 1:40000**References:**

Wang M., Proc. Natl. Acad. Sci. U.S.A. 91:10591-10595(1994).

Van Eynde A., Eur. J. Biochem. 261:291-300(1999).

Liu J.P., Submitted (FEB-1999) to the EMBL/GenBank/DDBJ databases.

**For Research Use Only**