



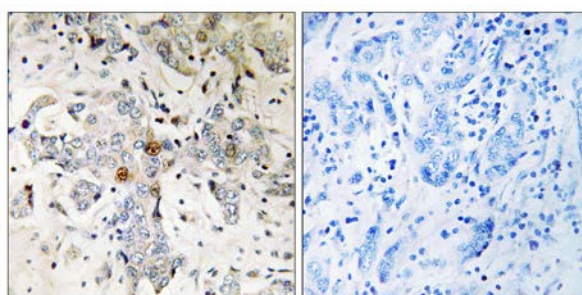
ZCCHC17 Antibody

E11-17167C**Catalog Number:** E11-17167C**Concentration:** 1mg/ml, 100ug/100uL**Swiss-Prot No.:** Q9NP64**Other Names:** Nucleolar protein of 40 kDa, pNO40; Zinc finger CCHC domain-containing protein 17; Putative S1 RNA-binding domain protein; PS1D protein; Pnn-interacting nucleolar protein**Storage/Stability:** Store at -20°C/1 year**Form of Antibody:** Rabbit IgG in phosphate buffered saline (without Mg^{2+} and Ca^{2+}), pH 7.4, 150mM NaCl, 0.02% sodium azide and 50% glycerol.**Immunogen:** The antiserum was produced against synthesized peptide derived from internal of human ZCCHC17.**Purification:** The antibody was affinity-purified from rabbit antiserum by affinity-chromatography using epitope-specific immunogen.**Specificity:** ZCCHC17 antibody detects endogenous levels of total ZCCHC17 protein.**Reactivity:** Human (Identities = 100%, Positives = 100%);
Mouse (Identities = 100%, Positives = 100%)**Applications:** IHC: 1:50~1:100 ELISA: 1:20000**References:**

Chang W.-L., Biochem. Biophys. Res. Commun. 307:569-577(2003).

Zhang Q.-H., Genome Res. 10:1546-1560(2000).

The MGC Project Team; Genome Res. 14:2121-2127(2004).



Peptide - +

Immunohistochemistry analysis of paraffin-embedded human breast carcinoma tissue using ZCCHC17 antibody.

For Research Use Only