



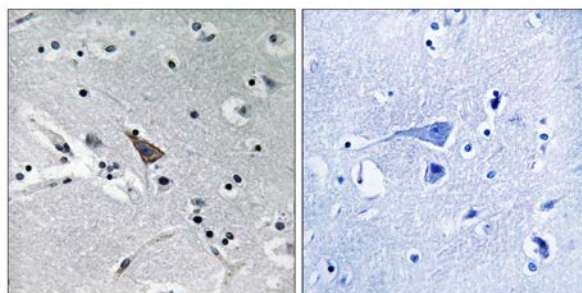
## SLC6A16 Antibody

**E11-17576C****Catalog Number:** E11-17576C**Concentration:** 1mg/ml, 100ug/100uL**Swiss-Prot No.:** Q9GZN6**Other Names:** Orphan sodium- and chloride-dependent neurotransmitter transporter NTT5, Solute carrier family 6 member 16**Storage/Stability:** Store at -20°C/1 year**Form of Antibody:** Rabbit IgG in phosphate buffered saline (without  $Mg^{2+}$  and  $Ca^{2+}$ ), pH 7.4, 150mM NaCl, 0.02% sodium azide and 50% glycerol.**Immunogen:** The antiserum was produced against synthesized peptide derived from internal of human SLC6A16.**Purification:** The antibody was affinity-purified from rabbit antiserum by affinity-chromatography using epitope-specific immunogen.**Specificity:** SLC6A16 antibody detects endogenous levels of total SLC6A16 protein.**Reactivity:** Human (Identities = 100%, Positives = 100%)**Applications:** IHC: 1:50~1:100 ELISA: 1:40000**References:**

Tewari D.S., Biochim. Biophys. Acta 1209:293-295(1994).

Hideyama T., Submitted (OCT-1996) to the EMBL/GenBank/DDBJ databases.

Yang D., Biochem. Mol. Biol. Int. 38:957-964(1996).



Peptide

-

+

Immunohistochemistry analysis of paraffin-embedded human brain tissue using SLC6A16 antibody.

**For Research Use Only**