



SLC6A15 Antibody

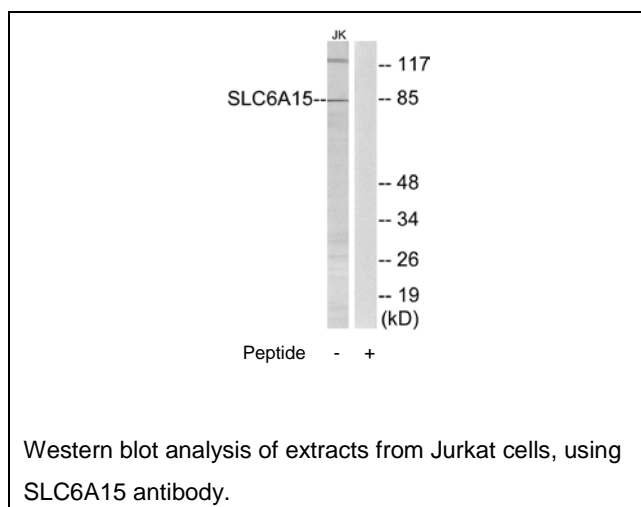
E11-17577C**Catalog Number:** E11-17577C**Concentration:** 1mg/ml, 100ug/100uL**Swiss-Prot No.:** Q9H2J7**Other Names:** NTT73; orphan sodium- and chloride-dependent neurotransmitter transporter NTT73; orphan transporter v7-3; S6A15; solute carrier family 6 member 15; V7-3**Storage/Stability:** Store at -20°C/1 year**Form of Antibody:** Rabbit IgG in phosphate buffered saline (without Mg^{2+} and Ca^{2+}), pH 7.4, 150mM NaCl, 0.02% sodium azide and 50% glycerol.**Immunogen:** The antiserum was produced against synthesized peptide CVEEGSEVEDERPAW derived from

internal of human SLC6A15.

Purification: The antibody was affinity-purified from rabbit antiserum by affinity-chromatography using epitope-specific immunogen.**Specificity:** SLC6A15 antibody detects endogenous levels of total SLC6A15 protein.**Reactivity:** Human, Rat**Applications:** WB: 1:500~1:1000 ELISA: 1:40000**References:**

Farmer M.K., Genomics 70:241-252(2000).

The MGC Project Team; Genome Res. 14:2121-2127(2004).

**For Research Use Only**