



PHF3 Antibody

E11-17658C**Catalog Number:** E11-17658C**Concentration:** 1mg/ml, 100ug/100uL**Swiss-Prot No.:** Q92576**Other Names:** PHD finger protein 3**Storage/Stability:** Store at -20°C/1 year**Form of Antibody:** Rabbit IgG in phosphate buffered saline (without Mg^{2+} and Ca^{2+}), pH 7.4, 150mM NaCl, 0.02% sodium azide and 50% glycerol.**Immunogen:** The antiserum was produced against synthesized peptide derived from C-terminal of human PHF3.**Purification:** The antibody was affinity-purified from rabbit antiserum by affinity-chromatography using

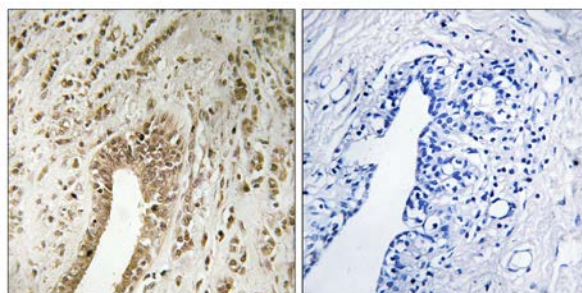
epitope-specific immunogen.

Specificity: PHF3 antibody detects endogenous levels of total PHF3 protein.**Reactivity:** Human (Identities = 100%, Positives = 100%)
Mouse (Identities = 92%, Positives = 100%)**Applications:** IHC: 1:50~1:100 ELISA: 1:40000**References:**

Fischer U., Cytogenet. Cell Genet. 94:131-136(2001).

Nagase T., DNA Res. 3:321-329(1996).

Nakajima D., DNA Res. 9:99-106(2002).



Peptide - +

Immunohistochemistry analysis of paraffin-embedded human breast carcinoma tissue using PHF3 antibody.

For Research Use Only