



## KCNK6 Antibody

**E11-17785C****Catalog Number:** E11-17785C**Concentration:** 1mg/ml**Swiss-Prot No.:** Q9Y257

**Other Names:** FLJ12282; Inward rectifying potassium channel protein TWIK-2; K2p6.1; K2P6.1 potassium channel; KCNK6; KCNK8; Potassium channel subfamily K member 6; potassium channel, subfamily K, member 6; TOSS; TWIK-2; TWIK-originated similarity sequence; TWIK-originated sodium similarity sequence; TWIK2

**Storage/Stability:** Store at -20°C/1 year

**Form of Antibody:** Rabbit IgG in phosphate buffered saline (without  $Mg^{2+}$  and  $Ca^{2+}$ ), pH 7.4, 150mM NaCl, 0.02% sodium azide and 50% glycerol.

**Immunogen:** The antiserum was produced against synthesized peptide derived from C-terminal of human KCNK6.

**Purification:** The antibody was affinity-purified from rabbit antiserum by affinity-chromatography using epitope-specific immunogen.

**Specificity:** KCNK6 antibody detects endogenous levels of total KCNK6 protein.

**Reactivity:** Human

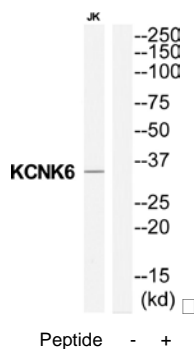
**Applications:** WB: 1:500~1:3000 ELISA: 1:1000

**References:**

Pountney D.J., FEBS Lett. 450:191-196(1999).

Chavez R.A., J. Biol. Chem. 274:7887-7892(1999).

Patel A.J., J. Biol. Chem. 275:28722-28730(2000).



**For Research Use Only**