



KCNC1 Antibody

E11-17797C**Catalog Number:** E11-17797C**Concentration:** 1mg/ml, 100ug/100uL**Swiss-Prot No.:** P48547**Other Names:** Potassium voltage-gated channel subfamily C member 1, NGK2, Voltage-gated potassium channel subunit Kv3.1, Voltage-gated potassium channel subunit Kv4**Storage/Stability:** Store at -20°C/1 year**Form of Antibody:** Rabbit IgG in phosphate buffered saline (without Mg^{2+} and Ca^{2+}), pH 7.4, 150mM NaCl, 0.02% sodium azide and 50% glycerol.**Immunogen:** The antiserum was produced against synthesized peptide derived from internal of human KCNC1.**Purification:** The antibody was affinity-purified from

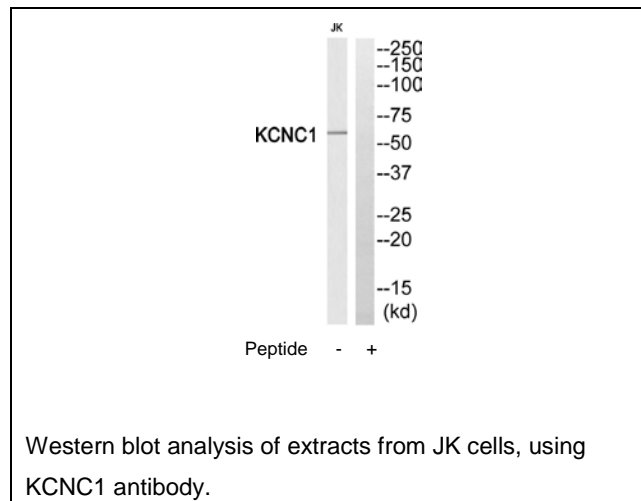
rabbit antiserum by affinity-chromatography using epitope-specific immunogen.

Specificity: KCNC1 antibody detects endogenous levels of total KCNC1 protein.**Reactivity:** Human, Mouse, Rat**Applications:** WB: 1:500~1:1000 ELISA: 1:1000**References:**

Ried T., Genomics 15:405-411(1993) [PubMed: 8449507].

Grissmer S., J. Biol. Chem. 267:20971-20979(1992) [PubMed: 1400413].

Wang Y., EMBO J. 25:5058-5070(2006) [PubMed: 17053785].

**For Research Use Only**