



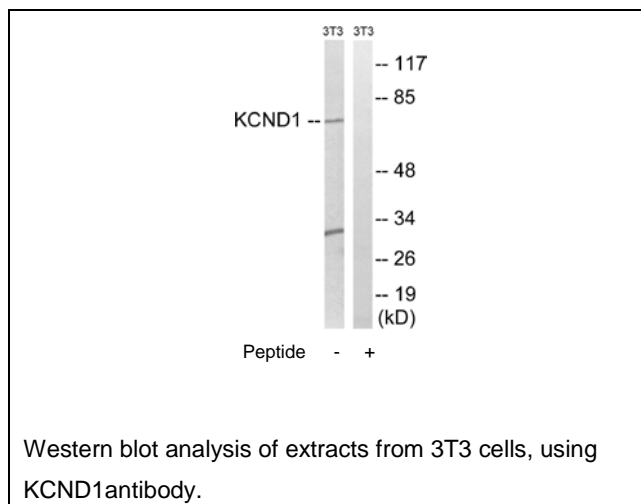
KCND1 Antibody

E11-17800C**Catalog Number:** E11-17800C**Concentration:** 1mg/ml, 100ug/100uL**Swiss-Prot No.:** Q9NSA2**Other Names:** KV4.1; potassium voltage-gated channel subfamily D member 1; potassium voltage-gated channel, Shal-related subfamily, member 1; voltage-gated potassium channel Kv4.1**Storage/Stability:** Store at -20°C/1 year**Form of Antibody:** Rabbit IgG in phosphate buffered saline (without Mg²⁺ and Ca²⁺), pH 7.4, 150mM NaCl, 0.02% sodium azide and 50% glycerol.**Immunogen:** The antiserum was produced against synthesized peptide derived from C-terminal of human KCND1.**Purification:** The antibody was affinity-purified from rabbit antiserum by affinity-chromatography using epitope-specific immunogen.**Specificity:** KCND1 antibody detects endogenous levels of total KCND1 protein.**Reactivity:** Human (Identities = 100%, Positives = 100%);
Mouse (Identities = 100%, Positives = 100%)**Applications:** WB: 1:500~1:1000 ELISA: 1:20000**References:**

Isbrandt D., Genomics 64:144-154(2000).

Makita N., Submitted (DEC-1998) to the EMBL/GenBank/DDBJ databases.

Strom T.M., Submitted (APR-1998) to the EMBL/GenBank/DDBJ databases.

**For Research Use Only**