



KCNF1 Antibody

E11-17808C**Catalog Number:** E11-17808C**Concentration:** 1mg/ml, 100ug/100uL**Swiss-Prot No.:** Q9H3M0**Other Names:** Potassium voltage-gated channel subfamily F member 1, Voltage-gated potassium channel subunit Kv5.1; kH1**Storage/Stability:** Store at -20°C/1 year**Form of Antibody:** Rabbit IgG in phosphate buffered saline (without Mg²⁺ and Ca²⁺), pH 7.4, 150mM NaCl, 0.02% sodium azide and 50% glycerol.**Immunogen:** The antiserum was produced against synthesized peptide derived from internal of human KCNF1.**Purification:** The antibody was affinity-purified from

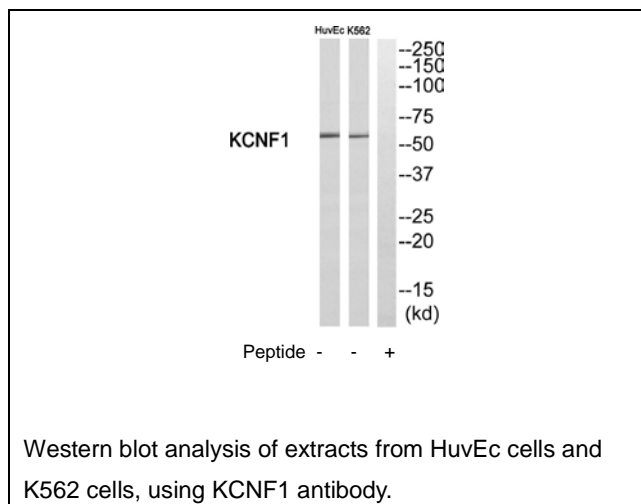
rabbit antiserum by affinity-chromatography using epitope-specific immunogen.

Specificity: KCNF1 antibody detects endogenous levels of total KCNF1 protein.**Reactivity:** Human (Identities = 100%, Positives = 100%);
Mouse (Identities = 92%, Positives = 100%)**Applications:** WB: 1:500~1:1000 ELISA: 1:5000**References:**

Su K., Biochem. Biophys. Res. Commun. 241:675-681(1997).

Chen J., Submitted (OCT-1997) to the EMBL/GenBank/DDBJ databases.

Hillier L.W., Nature 434:724-731(2005).

**For Research Use Only**