



KCNG2 Antibody

E11-17810C**Catalog Number:** E11-17810C**Concentration:** 1mg/ml, 100ug/100uL**Swiss-Prot No.:** Q9UJ96**Other Names:** KV4.1; potassium voltage-gated channel subfamily D member 1; potassium voltage-gated channel, Shal-related subfamily, member 1; voltage-gated potassium channel Kv4.1**Storage/Stability:** Store at -20°C/1 year**Form of Antibody:** Rabbit IgG in phosphate buffered saline (without Mg^{2+} and Ca^{2+}), pH 7.4, 150mM NaCl, 0.02% sodium azide and 50% glycerol.**Immunogen:** The antiserum was produced against synthesized peptide derived from internal of human

KCNG2.

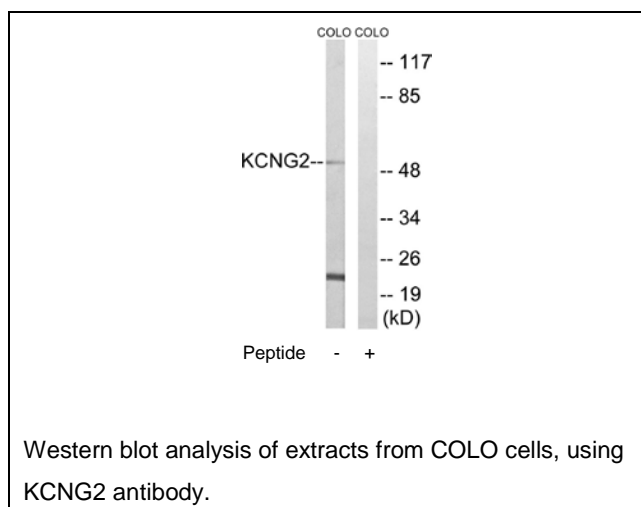
Purification: The antibody was affinity-purified from rabbit antiserum by affinity-chromatography using epitope-specific immunogen.**Specificity:** KCNG2 antibody detects endogenous levels of total KCNG2 protein.**Reactivity:** Human (Identities = 100%, Positives = 100%);

Mouse (Identities = 91%, Positives = 91%);

Rat (Identities = 91%, Positives = 91%)

Applications: WB: 1:500~1:1000 ELISA: 1:5000**References:**

Zhu X.-R., Recept. Channels 6:337-350(1999).

**For Research Use Only**