



KCNG3 Antibody

E11-17811C**Catalog Number:** E11-17811C**Concentration:** 1mg/ml, 100ug/100uL**Swiss-Prot No.:** Q8TAE7**Other Names:** KV10.1; KV6.3; potassium voltage-gated channel, subfamily G, member 3; voltage-gated potassium channel Kv6.3**Storage/Stability:** Store at -20°C/1 year**Form of Antibody:** Rabbit IgG in phosphate buffered saline (without Mg^{2+} and Ca^{2+}), pH 7.4, 150mM NaCl, 0.02% sodium azide and 50% glycerol.**Immunogen:** The antiserum was produced against synthesized peptide derived from internal of human KCNG3.**Purification:** The antibody was affinity-purified from

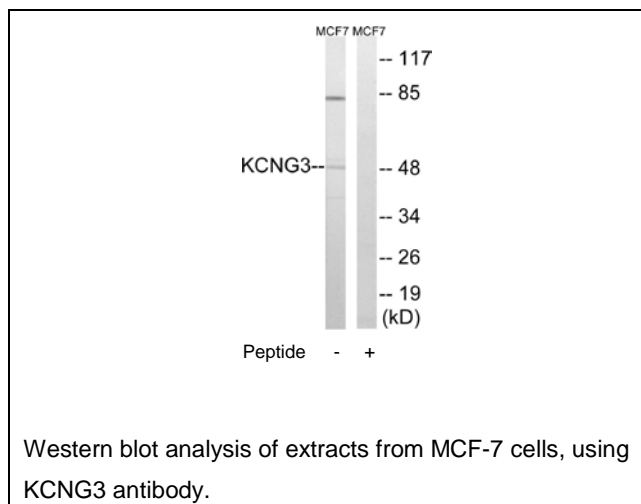
rabbit antiserum by affinity-chromatography using epitope-specific immunogen.

Specificity: KCNG3 antibody detects endogenous levels of total KCNG3 protein.**Reactivity:** Human (Identities = 100%, Positives = 100%);
Mouse (Identities = 100%, Positives = 100%);
Rat (Identities = 100%, Positives = 100%)**Applications:** WB: 1:500~1:1000 ELISA: 1:1000**References:**

Sano Y., FEBS Lett. 512:230-234(2002).

Ottshytsch N., Proc. Natl. Acad. Sci. U.S.A. 99:7986-7991(2002).

The MGC Project Team; Genome Res. 14:2121-2127(2004).

**For Research Use Only**