



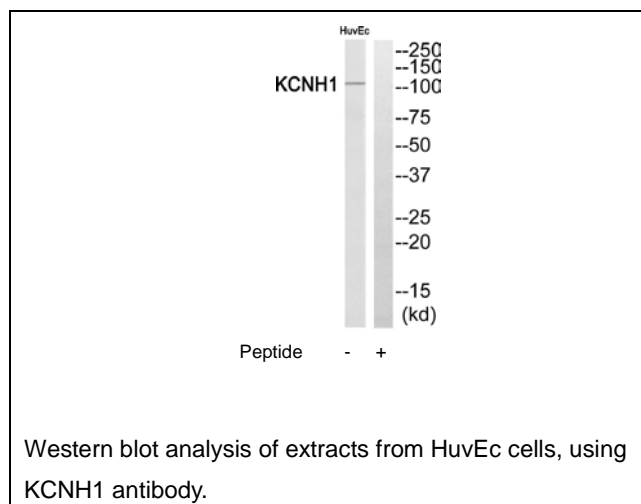
## KCNH1 Antibody

**E11-17813C****Catalog Number:** E11-17813C**Concentration:** 1mg/ml, 100ug/100uL**Swiss-Prot No.:** O95259**Other Names:** Potassium voltage-gated channel subfamily H member 1; Voltage-gated potassium channel subunit Kv10.1; Ether-a-go-go potassium channel 1; hEAG1; h-eag**Storage/Stability:** Store at -20°C/1 year**Form of Antibody:** Rabbit IgG in phosphate buffered saline (without  $Mg^{2+}$  and  $Ca^{2+}$ ), pH 7.4, 150mM NaCl, 0.02% sodium azide and 50% glycerol.**Immunogen:** The antiserum was produced against synthesized peptide derived from internal of human KCNH1.**Purification:** The antibody was affinity-purified from rabbit antiserum by affinity-chromatography using epitope-specific immunogen.**Specificity:** KCNH1 antibody detects endogenous levels of total KCNH1 protein.**Reactivity:** Human (Identities = 100%, Positives = 100%);  
Mouse (Identities = 100%, Positives = 100%);  
Rat (Identities = 100%, Positives = 100%)**Applications:** WB: 1:500~1:1000 ELISA: 1:5000**References:**

Occhiodoro T., FEBS Lett. 434:177-182(1998).

Pardo L.A., EMBO J. 18:5540-5547(1999).

Gregory S.G., Nature 441:315-321(2006).

**For Research Use Only**