



KCNH3 Antibody

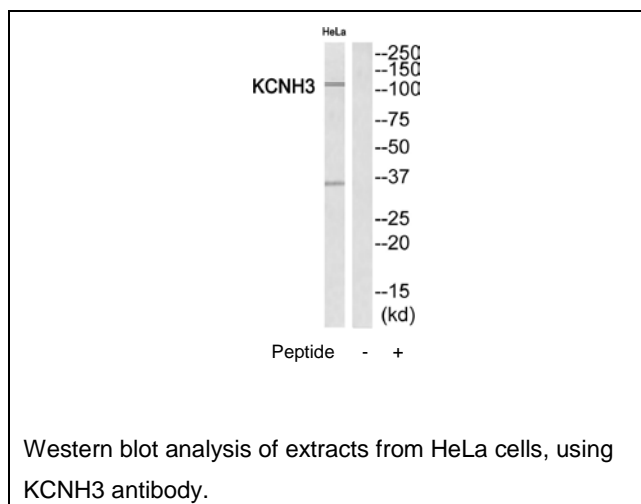
E11-17815C**Catalog Number:** E11-17815C**Concentration:** 1mg/ml**Swiss-Prot No.:** Q9ULD8**Other Names:** BEC1; Brain-specific eag-like channel 1; ELK channel 2; ELK2; ether-a-go-go K(+) channel family member; Ether-a-go-go-like potassium channel 2; KCNH3; KIAA1282; Kv12.2; Potassium voltage-gated channel subfamily H member 3; potassium voltage-gated channel, subfamily H (eag-related), member 3; Voltage-gated potassium channel subunit Kv12.2**Storage/Stability:** Store at -20°C/1 year**Form of Antibody:** Rabbit IgG in phosphate buffered saline (without Mg²⁺ and Ca²⁺), pH 7.4, 150mM NaCl, 0.02% sodium azide and 50% glycerol.**Immunogen:** The antiserum was produced against synthesized peptide derived from Internal of human

KCNH3.

Purification: The antibody was affinity-purified from rabbit antiserum by affinity-chromatography using epitope-specific immunogen.**Specificity:** KCNH3 antibody detects endogenous levels of total KCNH3 protein.**Reactivity:** Human; Mouse; Rat**Applications:** WB: 1:500~1:3000 ELISA: 1:40000**References:**

Miyake A., J. Biol. Chem. 274:25018-25025(1999).

Nagase T., DNA Res. 6:337-345(1999).

**For Research Use Only**