



PRPF39 Antibody

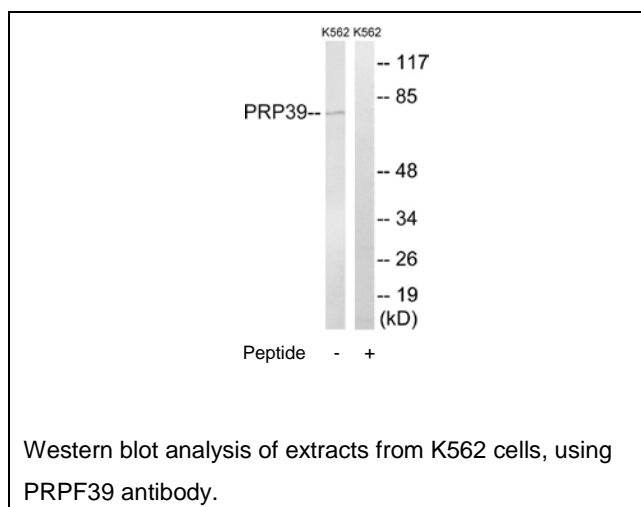
E11-17848C**Catalog Number:** E11-17848C**Concentration:** 1mg/ml, 100ug/100uL**Swiss-Prot No.:** Q86UA1**Other Names:** flj111128; flj20666; flj45460; mgc149842; mgc149843; prp39; prp39 pre-mrna processing factor 39; prp39 pre-mrna processing factor 39 homolog (s. cerevisiae); prpf39**Storage/Stability:** Store at -20°C/1 year**Form of Antibody:** Rabbit IgG in phosphate buffered saline (without Mg²⁺ and Ca²⁺), pH 7.4, 150mM NaCl, 0.02% sodium azide and 50% glycerol.**Immunogen:** The antiserum was produced against synthesized peptide derived from internal of human

PRPF39.

Purification: The antibody was affinity-purified from rabbit antiserum by affinity-chromatography using epitope-specific immunogen.**Specificity:** PRPF39 antibody detects endogenous levels of total PRPF39 protein.**Reactivity:** Human (Identities = 100%, Positives = 100%);
Mouse (Identities = 100%, Positives = 100%)**Applications:** WB: 1:500~1:1000 ELISA: 1:40000**References:**

Ota T., Nat. Genet. 36:40-45(2004).

The MGC Project Team; Genome Res. 14:2121-2127(2004).

**For Research Use Only**