



## PRPF38A Antibody

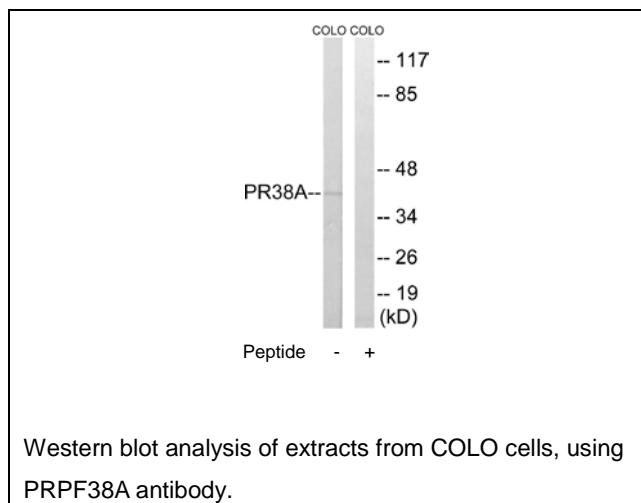
**E11-17853C****Catalog Number:** E11-17853C**Concentration:** 1mg/ml, 100ug/100uL**Swiss-Prot No.:** Q8NAV1**Other Names:** Hypothetical protein FLJ34719; PR38A**Storage/Stability:** Store at -20°C/1 year**Form of Antibody:** Rabbit IgG in phosphate buffered saline (without  $Mg^{2+}$  and  $Ca^{2+}$ ), pH 7.4, 150mM NaCl, 0.02% sodium azide and 50% glycerol.**Immunogen:** The antiserum was produced against synthesized peptide derived from internal of human PRPF38A.**Purification:** The antibody was affinity-purified from

rabbit antiserum by affinity-chromatography using epitope-specific immunogen.

**Specificity:** PRPF38A antibody detects endogenous levels of total PRPF38A protein.**Reactivity:** Human (Identities = 100%, Positives = 100%);  
Mouse (Identities = 100%, Positives = 100%)**Applications:** WB: 1:500~1:1000 ELISA: 1:20000**References:**

Ota T., Nat. Genet. 36:40-45(2004).

Gregory S.G., Nature 441:315-321(2006).

The MGC Project Team; Genome Res.  
14:2121-2127(2004).**For Research Use Only**