



## SLU7 Antibody

**E11-17858C****Catalog Number:** E11-17858C**Concentration:** 1mg/ml, 100ug/100uL**Swiss-Prot No.:** O95391**Other Names:** nuclear speck, spliceosome, cytoplasm, nucleus, small nuclear ribonucleoprotein complex**Storage/Stability:** Store at -20°C/1 year**Form of Antibody:** Rabbit IgG in phosphate buffered saline (without  $Mg^{2+}$  and  $Ca^{2+}$ ), pH 7.4, 150mM NaCl, 0.02% sodium azide and 50% glycerol.**Immunogen:** The antiserum was produced against synthesized peptide derived from internal of human SLU7.**Purification:** The antibody was affinity-purified from rabbit antiserum by affinity-chromatography using

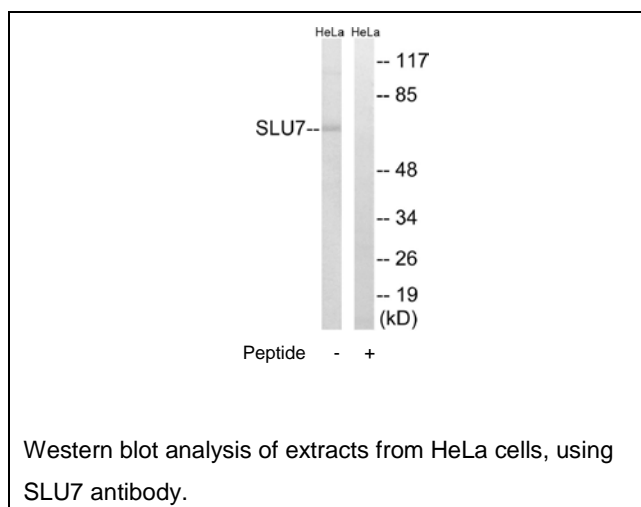
epitope-specific immunogen.

**Specificity:** SLU7 antibody detects endogenous levels of total SLU7 protein.**Reactivity:** Human (Identities = 100%, Positives = 100%);  
Mouse (Identities = 100%, Positives = 100%);  
Rat (Identities = 100%, Positives = 100%)**Applications:** WB: 1:500~1:1000 ELISA: 1:40000**References:**

Chua K., Genes Dev. 13:841-850(1999).

The MGC Project Team, Genome Res. 14:2121-2127(2004).

Chua K., Nature 402:207-210(1999).

**For Research Use Only**