



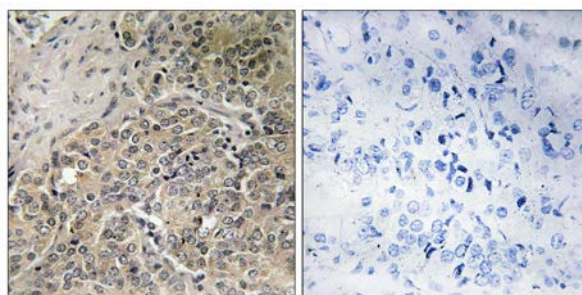
## A26C2/3 Antibody

**E11-17976C****Catalog Number:** E11-17976C**Concentration:** 1mg/ml, 100ug/100uL**Swiss-Prot No.:** Q6S5H5/Q6S545**Other Names:** Prostate, ovary, testis-expressed protein on chromosome 14; POTE-14**Storage/Stability:** Store at -20°C/1 year**Form of Antibody:** Rabbit IgG in phosphate buffered saline (without  $Mg^{2+}$  and  $Ca^{2+}$ ), pH 7.4, 150mM NaCl, 0.02% sodium azide and 50% glycerol.**Immunogen:** The antiserum was produced against synthesized peptide derived from internal of human

A26C2/3.

**Purification:** The antibody was affinity-purified from rabbit antiserum by affinity-chromatography using epitope-specific immunogen.**Specificity:** A26C2/3 antibody detects endogenous levels of total A26C2/3 protein.**Reactivity:** Human (Identities = 100%, Positives = 100%)**Applications:** IHC: 1:50~1:100 ELISA: 1:40000**References:**

Bera T.K., Gene 337:45-53(2004).



Peptide

-

+

Immunohistochemistry analysis of paraffin-embedded human prostate carcinoma tissue using A26C2/3 antibody.

**For Research Use Only**