



S100A16 Antibody

E11-18044C**Catalog Number:** E11-18044C**Concentration:** 1mg/ml, 100ug/100uL**Swiss-Prot No.:** Q96FQ6**Other Names:** S100 calcium-binding protein A16; S100F; S10AG; S116**Storage/Stability:** Store at -20 °C/1 year**Form of Antibody:** Rabbit IgG in phosphate buffered saline (without Mg^{2+} and Ca^{2+}), pH 7.4, 150mM NaCl, 0.02% sodium azide and 50% glycerol.**Immunogen:** The antiserum was produced against synthesized peptide derived from internal of human S100A16.**Purification:** The antibody was affinity-purified from

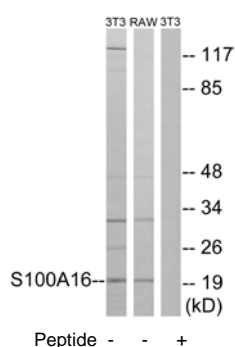
rabbit antiserum by affinity-chromatography using epitope-specific immunogen.

Specificity: S100A16 antibody detects endogenous levels of total S100A16 protein.**Reactivity:** Human, Rat**Applications:** WB: 1:500~1:1000 ELISA: 1:40000**References:**

Marenholz I., Submitted (OCT-2003) to the EMBL/GenBank/DDBJ databases.

Morita K.; Submitted (JAN-2003) to the EMBL/GenBank/DDBJ databases.

Gregory S.G., Nature 441:315-321(2006).

**For Research Use Only**