



S100A7L2 Antibody

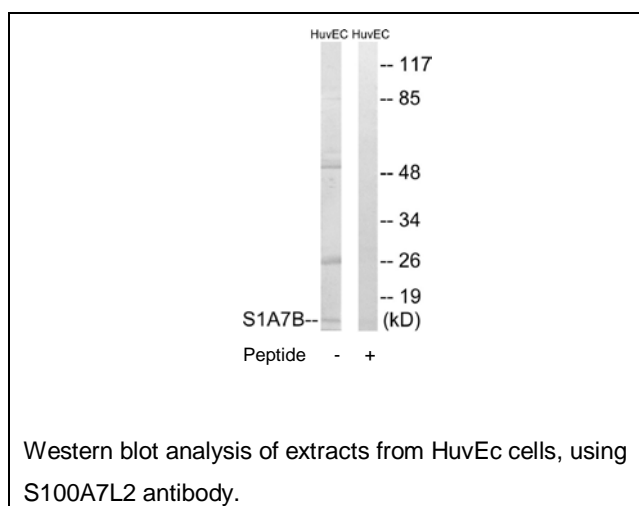
E11-18052C**Catalog Number:** E11-18052C**Concentration:** 1mg/ml, 100ug/100uL**Swiss-Prot No.:** Q5SY68**Other Names:** Protein S100-A7-like 2; S100 calcium-binding protein A7-like 2; S100A7B**Storage/Stability:** Store at -20 °C/1 year**Form of Antibody:** Rabbit IgG in phosphate buffered saline (without Mg^{2+} and Ca^{2+}), pH 7.4, 150mM NaCl, 0.02% sodium azide and 50% glycerol.**Immunogen:** The antiserum was produced against synthesized peptide derived from internal of human

S100A7L2.

Purification: The antibody was affinity-purified from rabbit antiserum by affinity-chromatography using epitope-specific immunogen.**Specificity:** S100A7L2 antibody detects endogenous levels of total S100A7L2 protein.**Reactivity:** Human (Identities = 100%, Positives = 100%)**Applications:** WB: 1:500~1:1000 ELISA: 1:10000**References:**

Gregory S.G., Nature 441:315-321(2006).

Kulski J.K., J. Mol. Evol. 56:397-406(2003).

**For Research Use Only**