



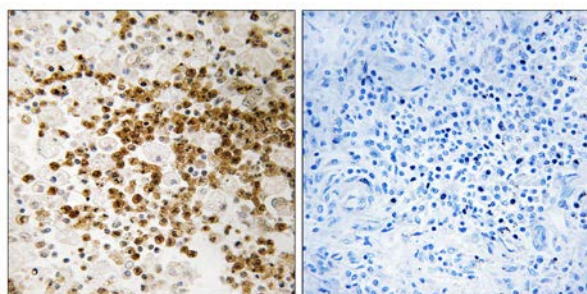
S100P Antibody

E11-18057C**Catalog Number:** E11-18057C**Concentration:** 1mg/ml, 100ug/100uL**Swiss-Prot No.:** P25815**Other Names:** Protein S100-P; S100 calcium-binding protein P; S100E**Storage/Stability:** Store at -20 °C/1 year**Form of Antibody:** Rabbit IgG in phosphate buffered saline (without Mg^{2+} and Ca^{2+}), pH 7.4, 150mM NaCl, 0.02% sodium azide and 50% glycerol.**Immunogen:** The antiserum was produced against synthesized peptide derived from internal of human S100P.**Purification:** The antibody was affinity-purified from rabbit antiserum by affinity-chromatography using epitope-specific immunogen.**Specificity:** S100P antibody detects endogenous levels of total S100P protein.**Reactivity:** Human (Identities = 100%, Positives = 100%)**Applications:** WB: 1:500~1:1000 IHC: 1:50~1:100
ELISA: 1:20000**References:**

Becker T., Eur. J. Biochem. 207:541-547(1992).

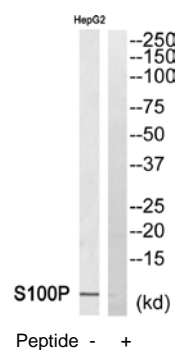
Jin G., Submitted (AUG-2002) to the EMBL/GenBank/DDBJ databases.

Kalline N., Submitted (MAY-2003) to the EMBL/GenBank/DDBJ databases.



Peptide - +

Immunohistochemistry analysis of paraffin-embedded human lung carcinoma tissue, using S100P antibody.



Western blot analysis of extracts from HepG2 cells, using S100P antibody.

For Research Use Only