



## PDHA1 Antibody

E11-18106C

**Catalog Number:** E11-18106C

**Concentration:** 1mg/ml, 100ug/100uL

**Swiss-Prot No.:** P08559

**Other Names:** Pyruvate dehydrogenase E1 component subunit alpha, somatic form, mitochondrial; PDHE1-A type I; PDHA1; PHE1A

**Storage/Stability:** Store at -20 °C/1 year

**Form of Antibody:** Rabbit IgG in phosphate buffered saline (without  $Mg^{2+}$  and  $Ca^{2+}$ ), pH 7.4, 150mM NaCl, 0.02% sodium azide and 50% glycerol.

**Immunogen:** The antiserum was produced against synthesized peptide derived from internal of human PDHA1.

**Purification:** The antibody was affinity-purified from

rabbit antiserum by affinity-chromatography using epitope-specific immunogen.

**Specificity:** PDHA1 antibody detects endogenous levels of total PDHA1 protein.

**Reactivity:** Human (Identities = 100%, Positives = 100%)

Mouse (Identities = 100%, Positives = 100%)

Rat (Identities = 100%, Positives = 100%)

**Applications:** WB: 1:500~1:1000 IHC: 1:50~1:100

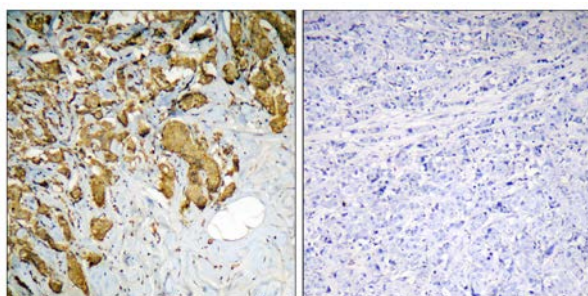
ELISA: 1:40000

**References:**

Song B.J., Submitted (APR-1990).

Bentley D.R., Nature 434:325-337(2005).

Comb M.J., Cell 131:1190-1203(2007).

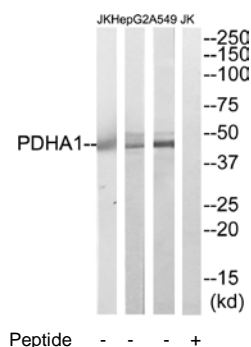


Peptide

-

+

Immunohistochemistry analysis of paraffin-embedded human breast carcinoma tissue using PDHA1 antibody.



Western blot analysis of extracts from A549, HepG2 and Jurkat cells, using PDHA1 antibody.

**For Research Use Only**