



RAB11FIP3 Antibody

E11-18121C**Catalog Number:** E11-18121C**Concentration:** 1mg/ml, 100ug/100uL**Swiss-Prot No.:** O75154**Other Names:** Rab11-FIP3; EF hands-containing Rab-interacting protein; Eferin**Storage/Stability:** Store at -20 °C/1 year**Form of Antibody:** Rabbit IgG in phosphate buffered saline (without Mg^{2+} and Ca^{2+}), pH 7.4, 150mM NaCl, 0.02% sodium azide and 50% glycerol.**Immunogen:** The antiserum was produced against synthesized peptide derived from C-terminal of human RAB11FIP3.**Purification:** The antibody was affinity-purified from

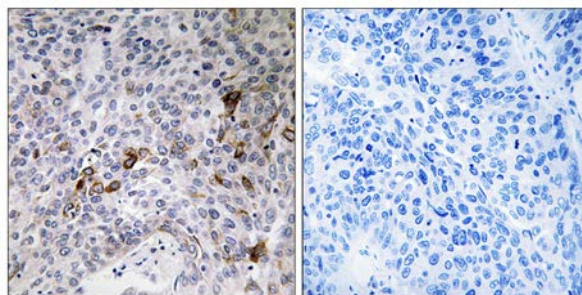
rabbit antiserum by affinity-chromatography using epitope-specific immunogen.

Specificity: RAB11FIP3 antibody detects endogenous levels of total RAB11FIP3 protein.**Reactivity:** Human (Identities = 100%, Positives = 100%);
Mouse (Identities = 93%, Positives = 100%);
Rat (Identities = 87%, Positives = 100%)**Applications:** IHC: 1:50~1:100 ELISA: 1:10000**References:**

Prekeris R., J. Biol. Chem. 276:38966-38970(2001).

Ishikawa K., DNA Res. 5:169-176(1998).

Daniels R.J., Hum. Mol. Genet. 10:339-352(2001).



Peptide

-

+

Immunohistochemistry analysis of paraffin-embedded human lung carcinoma tissue using RAB11FIP3 antibody.

For Research Use Only