



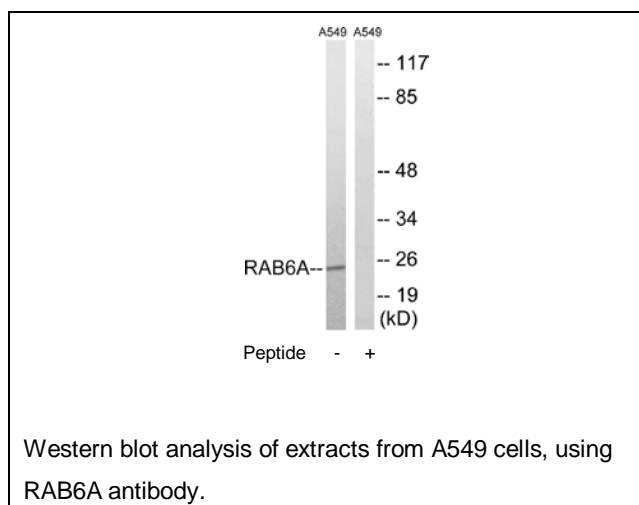
RAB6A Antibody

E11-18266C**Catalog Number:** E11-18266C**Concentration:** 1mg/ml, 100ug/100uL**Swiss-Prot No.:** P20340**Other Names:** gtp-binding protein rab6c; rab gtpase rab6a; rab6; rab6a, member ras oncogene family; ras-related protein rab6; small gtp binding protein rab6**Storage/Stability:** Store at -20 °C/1 year**Form of Antibody:** Rabbit IgG in phosphate buffered saline (without Mg^{2+} and Ca^{2+}), pH 7.4, 150mM NaCl, 0.02% sodium azide and 50% glycerol.**Immunogen:** The antiserum was produced against synthesized peptide derived from internal of human RAB6A.**Purification:** The antibody was affinity-purified from rabbit antiserum by affinity-chromatography using epitope-specific immunogen.**Specificity:** RAB6A antibody detects endogenous levels of total RAB6A protein.**Reactivity:** Human (Identities = 100%, Positives = 100%);
Mouse (Identities = 100%, Positives = 100%);
Rat (Identities = 100%, Positives = 100%)**Applications:** WB: 1:500~1:1000 ELISA: 1:20000**References:**

Zahraoui A., J. Biol. Chem. 264:12394-12401(1989).

Caillol N., J. Cell. Biochem. 79:628-647(2000).

Shan J., Gene 257:67-75(2000).

**For Research Use Only**