



RAP2C Antibody

E11-18282C**Catalog Number:** E11-18282C**Concentration:** 1mg/ml, 100ug/100uL**Swiss-Prot No.:** Q9Y3L5**Other Names:** RAP2C, member of RAS oncogene family;
Ras-related protein Rap-2c**Storage/Stability:** Store at -20°C/1 year**Form of Antibody:** Rabbit IgG in phosphate buffered saline (without Mg²⁺ and Ca²⁺), pH 7.4, 150mM NaCl, 0.02% sodium azide and 50% glycerol.**Immunogen:** The antiserum was produced against synthesized peptide derived from internal of human RAP2C.**Purification:** The antibody was affinity-purified from

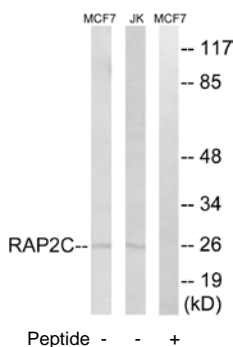
rabbit antiserum by affinity-chromatography using epitope-specific immunogen.

Specificity: RAP2C antibody detects endogenous levels of total RAP2C protein.**Reactivity:** Human (Identities = 100%, Positives = 100%);
Mouse (Identities = 100%, Positives = 100%)**Applications:** WB: 1:500~1:1000 ELISA: 1:10000**References:**

Shan Y.X., Submitted (MAY-2003) to the EMBL/GenBank/DDBJ databases.

Ross M.T., Nature 434:325-337(2005).

Paganini S., Biochimie 88:285-295(2006).

**For Research Use Only**