



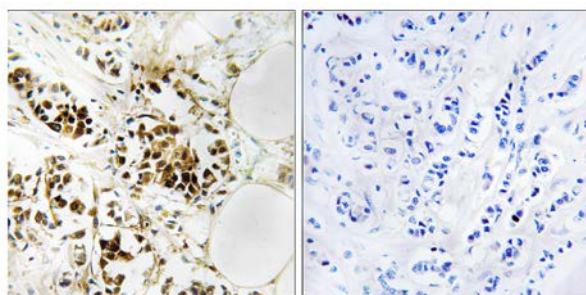
## RGS5 Antibody

**E11-18324C****Catalog Number:** E11-18324C**Concentration:** 1mg/ml, 100ug/100uL**Swiss-Prot No.:** O15539**Other Names:** MST092; MST106; MST129; MSTP032; MSTP092; MSTP106; MSTP129; regulator of G protein signaling-5**Storage/Stability:** Store at -20°C/1 year**Form of Antibody:** Rabbit IgG in phosphate buffered saline (without  $Mg^{2+}$  and  $Ca^{2+}$ ), pH 7.4, 150mM NaCl, 0.02% sodium azide and 50% glycerol.**Immunogen:** The antiserum was produced against synthesized peptide derived from internal of human RGS5.**Purification:** The antibody was affinity-purified from rabbit antiserum by affinity-chromatography using epitope-specific immunogen.**Specificity:** RGS5 antibody detects endogenous levels of total RGS5 protein.**Reactivity:** Human (Identities = 100%, Positives = 100%);  
Mouse (Identities = 100%, Positives = 100%);  
Rat (Identities = 100%, Positives = 100%)**Applications:** WB: 1:500~1:1000 IHC: 1:50~1:100  
ELISA: 1:40000**References:**

Chatterjee T.K., Submitted (OCT-1997) to the EMBL/GenBank/DDBJ databases.

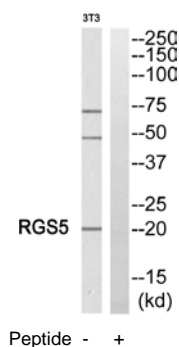
Seki N., J. Hum. Genet. 43:202-205(1998).

Cismowski M.J., Nat. Biotechnol. 17:878-883(1999).



Peptide - +

Immunohistochemistry analysis of paraffin-embedded human breast carcinoma tissue, using RGS5 antibody.



Western blot analysis of extracts from NIH/3T3 cells, using RGS5 antibody.

**For Research Use Only**