



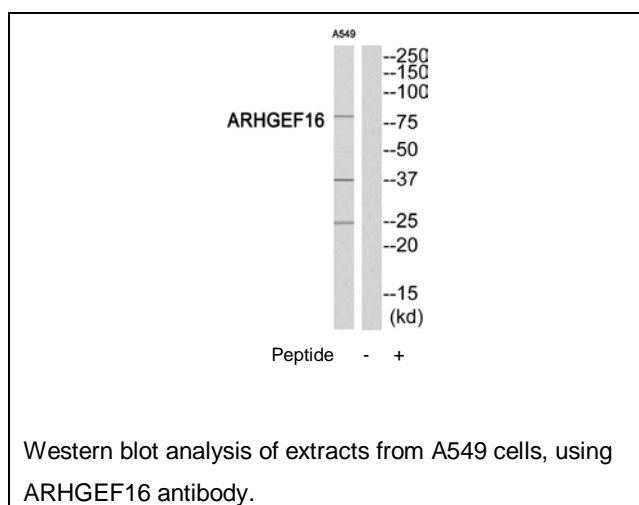
ARHGEF16 Antibody

E11-18390C**Catalog Number:** E11-18390C**Concentration:** 1mg/ml**Swiss-Prot No.:** Q5VV41**Other Names:** ARHGEF16; ARHGG; GEF16; NBR; Rho guanine exchange factor (GEF) 16; Rho guanine nucleotide exchange factor (GEF) 16; Rho guanine nucleotide exchange factor 16**Storage/Stability:** Store at -20 °C/1 year**Form of Antibody:** Rabbit IgG in phosphate buffered saline (without Mg^{2+} and Ca^{2+}), pH 7.4, 150mM NaCl, 0.02% sodium azide and 50% glycerol.**Immunogen:** The antiserum was produced against synthesized peptide derived from Internal of human ARHGEF16.**Purification:** The antibody was affinity-purified from rabbit antiserum by affinity-chromatography using epitope-specific immunogen.**Specificity:** ARHGEF16 antibody detects endogenous levels of total ARHGEF16 protein.**Reactivity:** Human**Applications:** WB: 1:500~1:1000 ELISA: 1:20000**References:**

Sasaki S., Submitted (NOV-1996) to the EMBL/GenBank/DDBJ databases.

Kalnine N., Submitted (MAY-2003) to the EMBL/GenBank/DDBJ databases.

Gregory S.G., Nature 441:315-321(2006).

**For Research Use Only**