



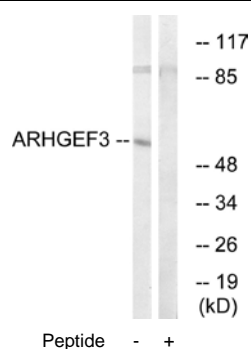
## ARHGEF3 Antibody

**E11-18393C****Catalog Number:** E11-18393C**Concentration:** 1mg/ml, 100ug/100uL**Swiss-Prot No.:** Q9NR81**Other Names:** ARHG3; DKFZP434F2429; exchange factor found in platelets and leukemic and neuronal tissues; GEF3; MGC118905; Rho guanine nucleotide exchange factor 3; STA3; XPLN**Storage/Stability:** Store at -20°C/1 year**Form of Antibody:** Rabbit IgG in phosphate buffered saline (without  $Mg^{2+}$  and  $Ca^{2+}$ ), pH 7.4, 150mM NaCl, 0.02% sodium azide and 50% glycerol.**Immunogen:** The antiserum was produced against synthesized peptide derived from internal of human ARHGEF3.**Purification:** The antibody was affinity-purified from rabbit antiserum by affinity-chromatography using epitope-specific immunogen.**Specificity:** ARHGEF3 antibody detects endogenous levels of total ARHGEF3 protein.**Reactivity:** Human, Mouse**Applications:** WB: 1:500~1:1000 ELISA: 1:5000**References:**

Thiesen S., Biochem. Biophys. Res. Commun. 273:364-369(2000).

Wiemann S., Genome Res. 11:422-435(2001).

Guo J.H., Submitted (OCT-2001) to the EMBL/GenBank/DDBJ databases.



Western blot analysis of extracts from COLO cells, using ARHGEF3 antibody.

**For Research Use Only**