



RPS6KL1 Antibody

E11-18430C

Catalog Number: E11-18430C

Concentration: 1mg/ml, 100ug/100ul

Swiss-Prot No.: Q9Y6S9

Other Names: Ribosomal protein S6 kinase-like 1; EC 2.7.11.1; RPS6KL1

Storage/Stability: Store at -20°C/1 year

Form of Antibody: Rabbit IgG in phosphate buffered saline (without Mg^{2+} and Ca^{2+}), pH 7.4, 150mM NaCl, 0.02% sodium azide and 50% glycerol.

Immunogen: The antiserum was produced against synthesized peptide derived from internal of human RPS6KL1.

Purification: The antibody was affinity-purified from rabbit antiserum by affinity-chromatography using epitope-specific immunogen.

Specificity: RPS6KL1 antibody detects endogenous levels of total RPS6KL1 protein.

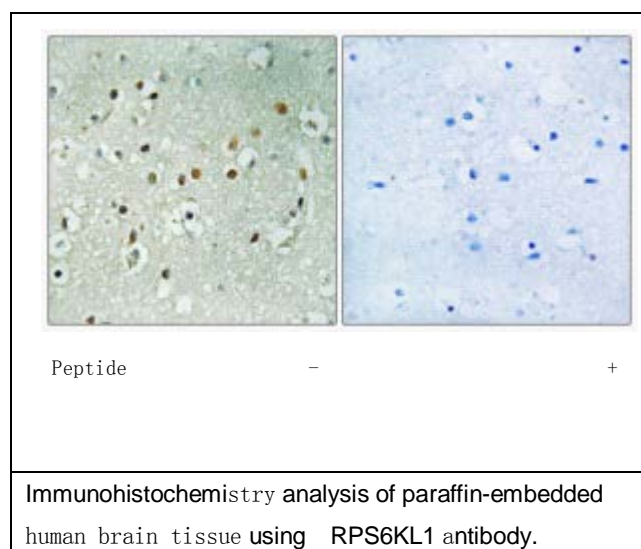
Reactivity: Human (Identities = 100%, Positives = 100%)

Applications: IHC: 1:50~1:100 ELISA: 1:40000

References:

Ota T., Nat. Genet. 36:40-45(2004).

Heilig R., Nature 421:601-607(2003).



For Research Use Only