



## RIMKB Antibody

**E11-18432C**

**Catalog Number:** E11-18432C

**Concentration:** 1mg/ml, 100ug/100ul

**Swiss-Prot No.:** Q9ULI2

**Other Names:** family with sequence similarity 80, member B; KIAA1238; ribosomal protein S6 modification-like B; RIMKB

**Storage/Stability:** Store at -20°C/1 year

**Form of Antibody:** Rabbit IgG in phosphate buffered saline (without  $Mg^{2+}$  and  $Ca^{2+}$ ), pH 7.4, 150mM NaCl, 0.02% sodium azide and 50% glycerol.

**Immunogen:** The antiserum was produced against synthesized peptide derived from internal of human RIMKB.

**Purification:** The antibody was affinity-purified from rabbit antiserum by affinity-chromatography using epitope-specific immunogen.

**Specificity:** RIMKB antibody detects endogenous levels of total RIMKB protein.

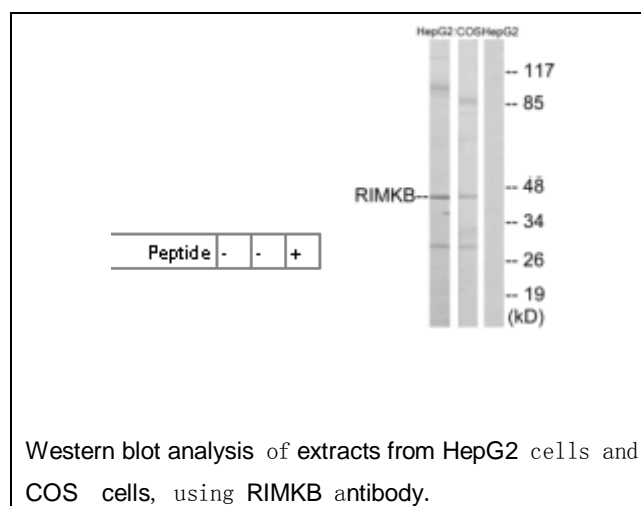
**Reactivity:** Human, Mouse

**Applications:** WB: 1:500~1:1000    ELISA: 1:5000

**References:**

Nagase T., DNA Res. 6:337-345(1999).

The MGC Project Team; Genome Res. 14:2121-2127(2004).



**For Research Use Only**