



MRRF Antibody

E11-18437C

Catalog Number: E11-18437C

Concentration: 1mg/ml, 100ug/100ul

Swiss-Prot No.: Q96E11

Other Names: Ribosome-recycling factor, mitochondrial; RRF; Ribosome-releasing factor, mitochondrial

Storage/Stability: Store at -20°C/1 year

Form of Antibody: Rabbit IgG in phosphate buffered saline (without Mg^{2+} and Ca^{2+}), pH 7.4, 150mM NaCl, 0.02% sodium azide and 50% glycerol.

Immunogen: The antiserum was produced against synthesized peptide derived from internal of human MRRF.

Purification: The antibody was affinity-purified from rabbit antiserum by affinity-chromatography using epitope-specific immunogen.

Specificity: MRRF antibody detects endogenous levels of total MRRF protein.

Reactivity: Human (Identities = 100%, Positives = 100%);

Mouse (Identities = 86%, Positives = 100%);

Rat (Identities = 86%, Positives = 100%)

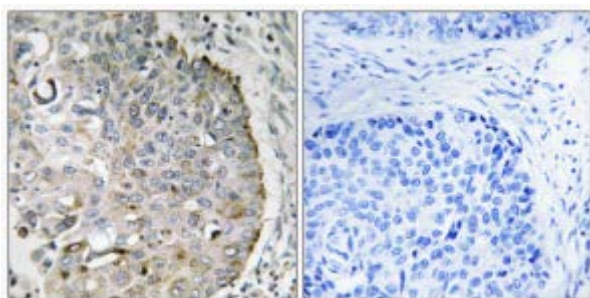
Applications: WB: 1:500~1:1000 IHC: 1:50~1:100 ELISA: 1:20000

References:

Ota T., Nat. Genet. 36:40-45(2004).

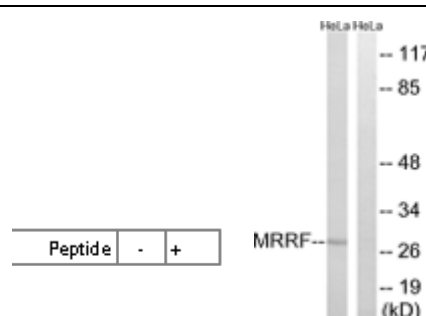
Humphray S.J., Nature 429:369-374(2004).

Zhang Y., Biochim. Biophys. Acta 1443:245-250(1998).



Peptide - +

Immunohistochemistry analysis of paraffin-embedded human lung carcinoma tissue, using MRRF antibody.



Western blot analysis of extracts from HeLa cells, using MRRF antibody.

For Research Use Only