



EWSR1 Antibody

E11-18461C

Catalog Number: E11-18461C

Concentration: 1mg/ml, 100ug/100ul

Swiss-Prot No.: Q01844

Other Names: EWS oncogene; Ewing sarcoma breakpoint region 1 protein

Storage/Stability: Store at -20°C/1 year

Form of Antibody: Rabbit IgG in phosphate buffered saline (without Mg^{2+} and Ca^{2+}), pH 7.4, 150mM NaCl, 0.02% sodium azide and 50% glycerol.

Immunogen: The antiserum was produced against synthesized peptide derived from internal of human EWSR1.

Purification: The antibody was affinity-purified from rabbit antiserum by affinity-chromatography using epitope-specific immunogen.

Specificity: EWSR1 antibody detects endogenous levels of total EWSR1 protein.

Reactivity: Human (Identities = 100%, Positives = 100%) ;

Mouse (Identities = 100%, Positives = 100%) ;

Rat (Identities = 92%, Positives = 100%)

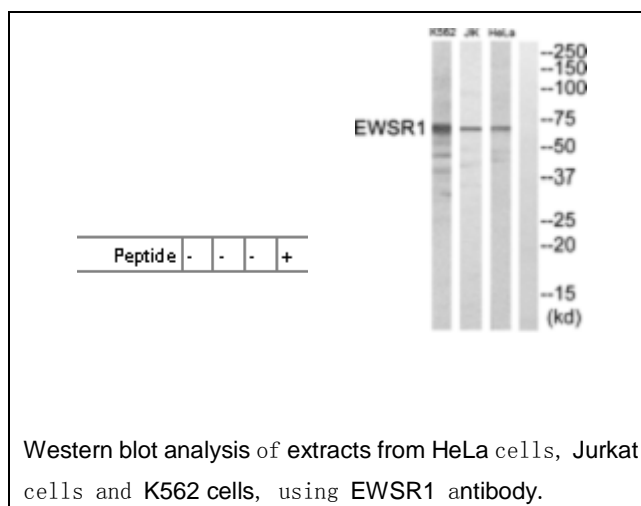
Applications: WB: 1:500~1:1000 ELISA: 1:10000

References:

Delattre O., Nature 359:162-165(1992).

Plougastel B., Genomics 18:609-615(1993).

Zucman-Rossi J., Submitted (MAY-1998) to the EMBL/GenBank/DDBJ databases.



For Research Use Only