



SCFD1 Antibody

E11-18481C

Catalog Number: E11-18481C

Concentration: 1mg/ml, 100ug/100ul

Swiss-Prot No.: Q8WVM8

Other Names: Sec1 family domain-containing protein 1 Syntaxin-binding protein 1-like 2; Sly1p SCFD1

Storage/Stability: Store at -20°C/1 year

Form of Antibody: Rabbit IgG in phosphate buffered saline (without Mg^{2+} and Ca^{2+}), pH 7.4, 150mM NaCl, 0.02% sodium azide and 50% glycerol.

Immunogen: The antiserum was produced against synthesized peptide derived from C-terminal of human SCFD1.

Purification: The antibody was affinity-purified from rabbit antiserum by affinity-chromatography using epitope-specific immunogen.

Specificity: SCFD1 antibody detects endogenous levels of total SCFD1 protein.

Reactivity: Human (Identities = 100%, Positives = 100%);

Mouse (Identities = 100%, Positives = 100%);

Rat (Identities = 100%, Positives = 100%)

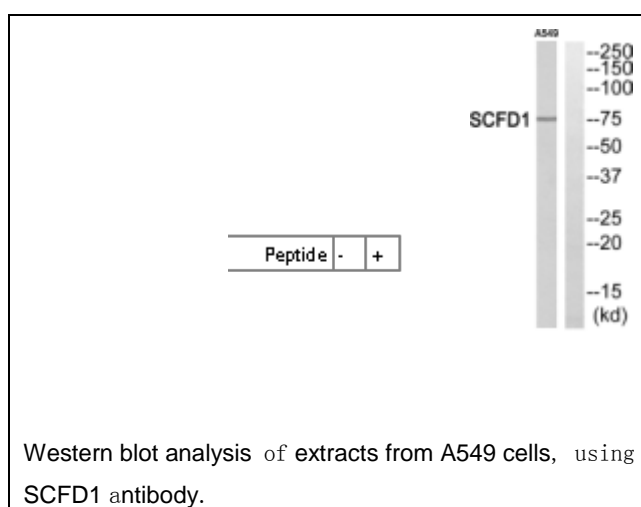
Applications: WB: 1:500~1:1000 ELISA: 1:10000

References:

Nagase T., DNA Res. 5:355-364(1998).

Song H., Submitted (DEC-1998) to the EMBL/GenBank/DDBJ databases.

Wang Y.-G., Submitted (NOV-2000) to the EMBL/GenBank/DDBJ databases.



For Research Use Only