



SERGEF Antibody

E11-18488C

Catalog Number: E11-18488C

Concentration: 1mg/ml, 100ug/100ul

Swiss-Prot No.: Q9UGK8

Other Names: Guanine nucleotide exchange factor-related protein; Deafness locus-associated putative guanine nucleotide exchange factor; DelGEF

Storage/Stability: Store at -20°C/1 year

Form of Antibody: Rabbit IgG in phosphate buffered saline (without Mg^{2+} and Ca^{2+}), pH 7.4, 150mM NaCl, 0.02% sodium azide and 50% glycerol.

Immunogen: The antiserum was produced against synthesized peptide derived from internal of human SERGEF.

Purification: The antibody was affinity-purified from rabbit antiserum by affinity-chromatography using epitope-specific immunogen.

Specificity: SERGEF antibody detects endogenous levels of total SERGEF protein.

Reactivity: Human (Identities = 100%, Positives = 100%)

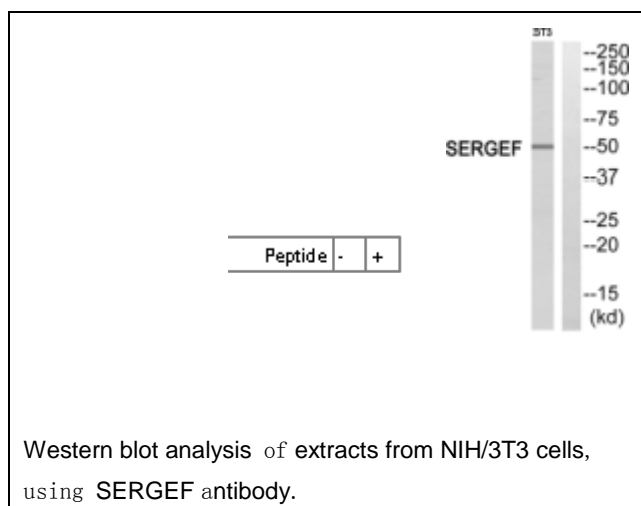
Applications: WB: 1:500~1:1000 ELISA: 1:20000

References:

Uhlmann J., FEBS Lett. 460:153-160(1999).

The MGC Project Team, Genome Res. 14:2121-2127(2004).

Sjoelinder M., FEBS Lett. 532:211-215(2002).



For Research Use Only