



## SCAMP1 Antibody

E11-18492C

**Catalog Number:** E11-18492C

**Concentration:** 1mg/ml,100ug/100ul

**Swiss-Prot No.:** O15126

**Other Names:** Secretory carrier membrane protein 1

**Storage/Stability:** Store at -20°C/1 year

**Form of Antibody:** Rabbit IgG in phosphate buffered saline (without Mg<sup>2+</sup> and Ca<sup>2+</sup>), pH 7.4, 150mM NaCl, 0.02% sodium azide and 50% glycerol.

**Immunogen:** The antiserum was produced against synthesized peptide derived from internal of human SCAMP1.

**Purification:** The antibody was affinity-purified from rabbit antiserum by affinity-chromatography using epitope-specific immunogen.

**Specificity:** SCAMP1 antibody detects endogenous levels of total SCAMP1 protein.

**Reactivity:** Human (Identities = 100%, Positives = 100%) ;

Mouse (Identities = 100%, Positives = 100%) ;

Rat (Identities = 100%, Positives = 100%)

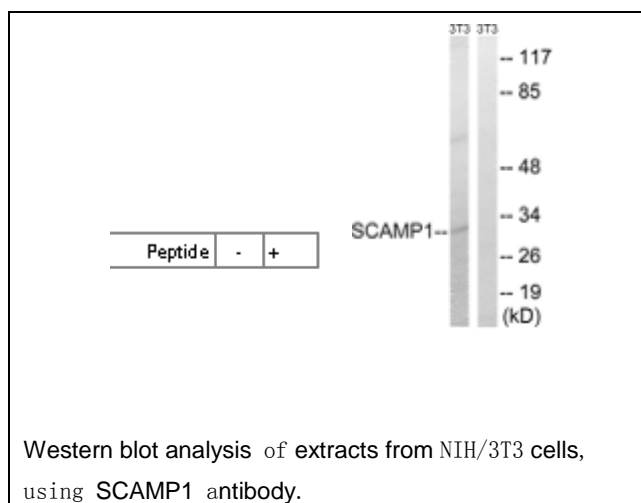
**Applications:** WB: 1:500~1:1000 ELISA: 1:20000

**References:**

Singleton D.R., J. Cell Sci. 110:2099-2107(1997).

Mao M., Proc. Natl. Acad. Sci. U.S.A. 95:8175-8180(1998).

Ebert L., Submitted (JUN-2004) to the EMBL/GenBank/DDBJ databases.



**For Research Use Only**