



SEPT2 Antibody

E11-18509C

Catalog Number: E11-18509C

Concentration: 1mg/ml, 100ug/100ul

Swiss-Prot No.: Q15019

Other Names: Protein NEDD5; Septin-2; Neural precursor cell expressed developmentally down-regulated protein 5; DIFF6, KIAA0158, NEDD5

Storage/Stability: Store at -20°C/1 year

Form of Antibody: Rabbit IgG in phosphate buffered saline (without Mg^{2+} and Ca^{2+}), pH 7.4, 150mM NaCl, 0.02% sodium azide and 50% glycerol.

Immunogen: The antiserum was produced against synthesized peptide derived from internal of human SEPT2.

Purification: The antibody was affinity-purified from rabbit antiserum by affinity-chromatography using epitope-specific immunogen.

Specificity: SEPT2 antibody detects endogenous levels of total SEPT2 protein.

Reactivity: Human (Identities = 100%, Positives = 100%) ;

Mouse (Identities = 100%, Positives = 100%) ;

Rat (Identities = 100%, Positives = 100%)

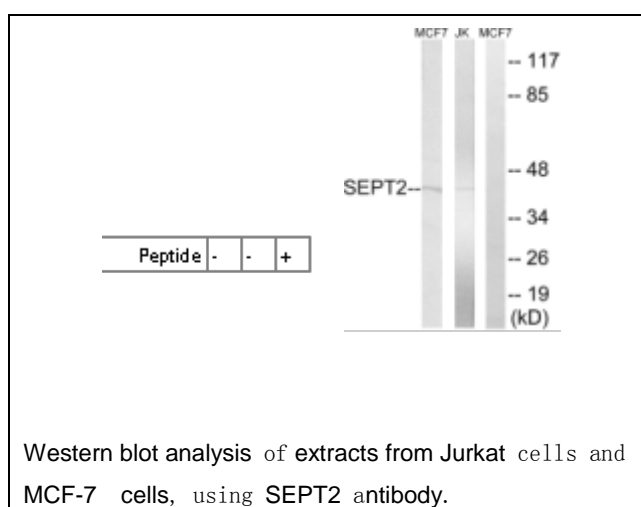
Applications: WB: 1:500~1:1000 ELISA: 1:20000

References:

Nagase T., DNA Res. 2:167-174(1995).

Mori T., Cytogenet. Cell Genet. 73:224-227(1996).

Ota T., Nat. Genet. 36:40-45(2004).



For Research Use Only

For Research Use Only