



PPP2R3C Antibody

E11-18655C

Catalog Number: E11-18655C

Concentration: 1mg/ml, 100ug/100ul

Swiss-Prot No.: Q969Q6

Other Names: Protein phosphatase subunit G5PR; Rhabdomyosarcoma antigen MU-RMS-40.6A; Rhabdomyosarcoma antigen Mu-RMS-40.6C

Storage/Stability: Store at -20°C/1 year

Form of Antibody: Rabbit IgG in phosphate buffered saline (without Mg^{2+} and Ca^{2+}), pH 7.4, 150mM NaCl, 0.02% sodium azide and 50% glycerol.

Immunogen: The antiserum was produced against synthesized peptide derived from internal of human PPP2R3C.

Purification: The antibody was affinity-purified from rabbit antiserum by affinity-chromatography using epitope-specific immunogen.

Specificity: PPP2R3C antibody detects endogenous levels of total PPP2R3C protein.

Reactivity: Human (Identities = 100%, Positives = 100%);

Mouse (Identities = 100%, Positives = 100%);

Rat (Identities = 100%, Positives = 100%)

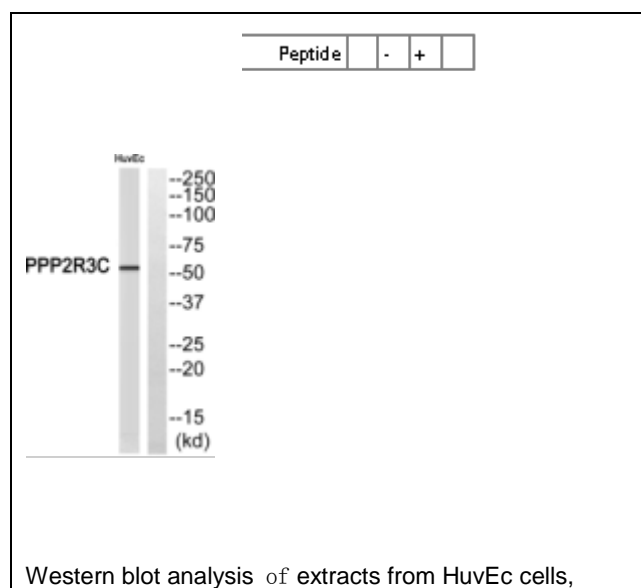
Applications: WB: 1:500~1:1000 ELISA: 1:20000

References:

Kamnasaran D., Genomics 85:608-621(2005).

Ota T., Nat. Genet. 36:40-45(2004).

Mural R.J., Submitted (SEP-2005) to the EMBL/GenBank/DDBJ databases.



For Research Use Only

using PPP2R3C antibody.

For Research Use Only