



SLC6A1 Antibody

E11-18797C

Catalog Number: E11-18797C

Concentration: 1mg/ml, 100ug/100ul

Swiss-Prot No.: P30531

Other Names: Sodium- and chloride-dependent GABA transporter 1; GAT-1; Solute carrier family 6 member 1; SLC6A1; GABATR, GABT1, GAT1

Storage/Stability: Store at -20°C/1 year

Form of Antibody: Rabbit IgG in phosphate buffered saline (without Mg^{2+} and Ca^{2+}), pH 7.4, 150mM NaCl, 0.02% sodium azide and 50% glycerol.

Immunogen: The antiserum was produced against synthesized peptide derived from internal of human SLC6A1.

Purification: The antibody was affinity-purified from rabbit antiserum by affinity-chromatography using epitope-specific immunogen.

Specificity: SLC6A1 antibody detects endogenous levels of total SLC6A1 protein.

Reactivity: Human (Identities = 100%, Positives = 100%);

Mouse (Identities = 100%, Positives = 100%);

Rat (Identities = 100%, Positives = 100%)

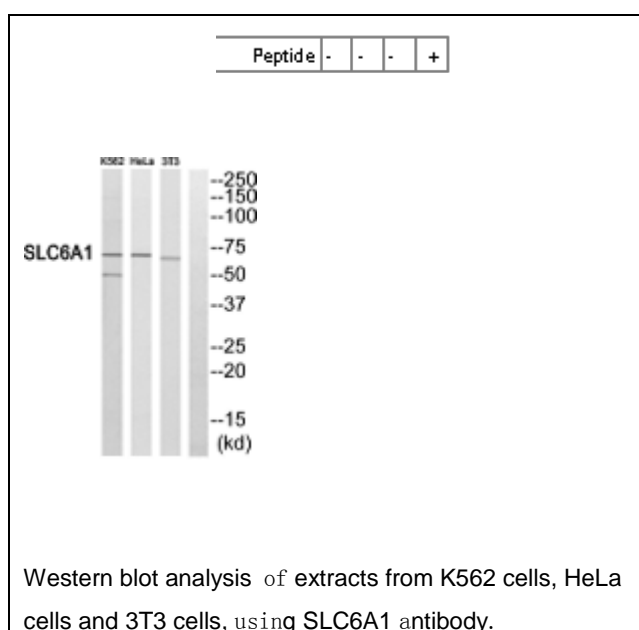
Applications: WB: 1:500~1:1000 ELISA: 1:40000

References:

Nelson H., FEBS Lett. 269:181-184(1990).

Muzny D.M., Nature 440:1194-1198(2006).

The MGC Project Team, Genome Res. 14:2121-2127(2004).



For Research Use Only

For Research Use Only