



## SF3B4 Antibody

E11-18922C

**Catalog Number:** E11-18922C

**Concentration:** 1mg/ml, 100ug/100ul

**Swiss-Prot No.:** Q15427

**Other Names:** Spliceosome-associated protein 49; SAP 49; SF3b50; Pre-mRNA-splicing factor SF3b 49 kDa subunit

**Storage/Stability:** Store at -20°C/1 year

**Form of Antibody:** Rabbit IgG in phosphate buffered saline (without  $Mg^{2+}$  and  $Ca^{2+}$ ), pH 7.4, 150mM NaCl, 0.02% sodium azide and 50% glycerol.

**Immunogen:** The antiserum was produced against synthesized peptide derived from internal of human SF3B4.

**Purification:** The antibody was affinity-purified from rabbit antiserum by affinity-chromatography using epitope-specific immunogen.

**Specificity:** SF3B4 antibody detects endogenous levels of total SF3B4 protein.

**Reactivity:** Human (Identities = 100%, Positives = 100%)

Mouse (Identities = 100%, Positives = 100%)

Rat (Identities = 100%, Positives = 100%)

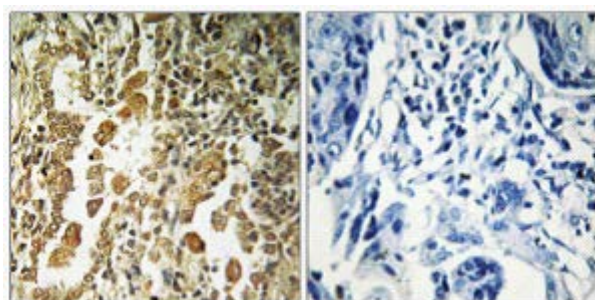
**Applications:** WB: 1:500~1:1000 IHC: 1:50~1:100 ELISA: 1:40000

### References:

Bentley D.R., Nature 441:315-321(2006).

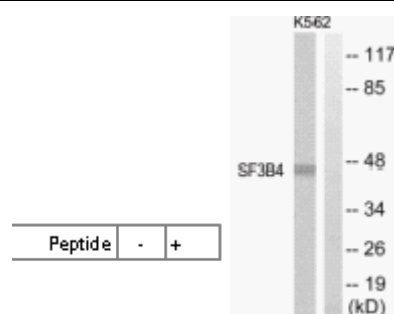
Comb M.J., Cell 131:1190-1203(2007).

Mohammed S., Anal. Chem. 81:4493-4501(2009).



Peptide - +

Immunohistochemistry analysis of paraffin-embedded human lung carcinoma tissue using SF3B4 antibody.



Western blot analysis of extracts from K562 and Jurkat cells, using SF3B4 antibody.

**For Research Use Only**