



## CCT5 Antibody

E11-19084C

**Catalog Number:** E11-19084C

**Concentration:** 1mg/ml,100ug/100ul

**Swiss-Prot No.:** P48643

**Other Names:** TCP-1-epsilon; CCT-epsilon

**Storage/Stability:** Store at -20°C/1 year

**Form of Antibody:** Rabbit IgG in phosphate buffered saline (without Mg<sup>2+</sup> and Ca<sup>2+</sup>), pH 7.4, 150mM NaCl, 0.02% sodium azide and 50% glycerol.

**Immunogen:** The antiserum was produced against synthesized peptide derived from internal of human CCT5.

**Purification:** The antibody was affinity-purified from rabbit antiserum by affinity-chromatography using epitope-specific immunogen.

**Specificity:** CCT5 antibody detects endogenous levels of total CCT5 protein.

**Reactivity:** Human (Identities = 100%, Positives = 100%)

Mouse (Identities = 100%, Positives = 100%)

Rat (Identities = 100%, Positives = 100%)

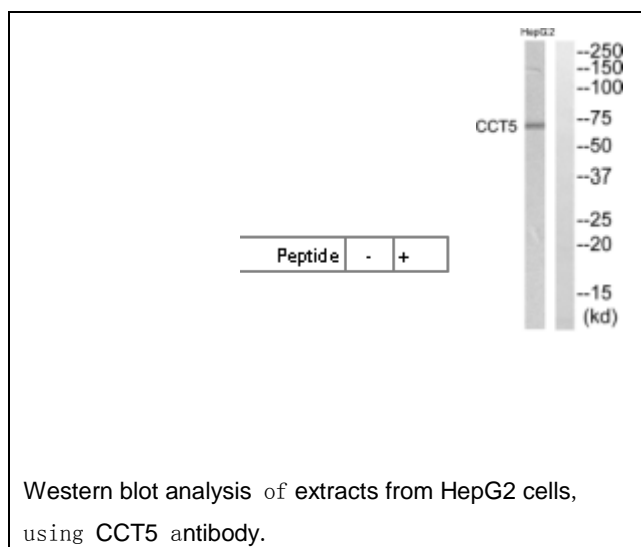
**Applications:** WB: 1:500~1:1000 ELISA: 1:40000

**References:**

Sugano S., Nat. Genet. 36:40-45(2004).

Venter J.C., Submitted (SEP-2005).

Lukashchuk N., Submitted (MAR-2008).



**For Research Use Only**