



TRAPPC1 Antibody

E11-19143C

Catalog Number: E11-19143C

Concentration: 1mg/ml, 100ug/100ul

Swiss-Prot No.: Q9Y5R8

Other Names: Trafficking protein particle complex subunit 1; BET5 homolog; Multiple myeloma protein 2; MUM-2; TRAPPC1; BET5; MUM2

Storage/Stability: Store at -20°C/1 year

Form of Antibody: Rabbit IgG in phosphate buffered saline (without Mg^{2+} and Ca^{2+}), pH 7.4, 150mM NaCl, 0.02% sodium azide and 50% glycerol.

Immunogen: The antiserum was produced against synthesized peptide derived from internal of human TRAPPC1.

Purification: The antibody was affinity-purified from rabbit antiserum by affinity-chromatography using epitope-specific immunogen.

Specificity: TRAPPC1 antibody detects endogenous levels of total TRAPPC1 protein.

Reactivity: Human (Identities = 100%, Positives = 100%) ; Mouse (Identities = 100%, Positives = 100%) ;
Rat (Identities = 100%, Positives = 100%)

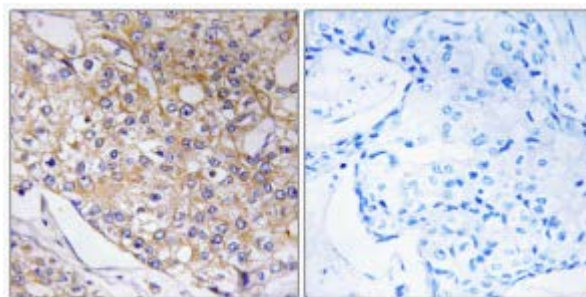
Applications: IHC: 1:50~1:100 ELISA: 1:5000

References:

Chiari R., Cancer Res. 59:5785-5792(1999).

The MGC Project Team, Genome Res. 14:2121-2127(2004).

Gavin A.-C., Nature 415:141-147(2002).



Peptide

-

+

Immunohistochemistry analysis of paraffin-embedded human breast carcinoma tissue using TRAPPC1 antibody.

For Research Use Only

For Research Use Only