



## TIE1 Antibody

E11-19314C

**Catalog Number:** E11-19314C

**Concentration:** 1mg/ml,100ug/100ul

**Swiss-Prot No.:** P35590

**Other Names:** TIE; Tyrosine-protein kinase receptor Tie-1 precursor

**Storage/Stability:** Store at -20°C/1 year

**Form of Antibody:** Rabbit IgG in phosphate buffered saline (without Mg<sup>2+</sup> and Ca<sup>2+</sup>), pH 7.4, 150mM NaCl, 0.02% sodium azide and 50% glycerol.

**Immunogen:** The antiserum was produced against synthesized peptide derived from internal of human TIE1.

**Purification:** The antibody was affinity-purified from rabbit antiserum by affinity-chromatography using epitope-specific immunogen.

**Specificity:** TIE1 antibody detects endogenous levels of total TIE1 protein.

**Reactivity:** Human (Identities = 100%, Positives = 100%);

Mouse (Identities = 100%, Positives = 100%);

Rat (Identities = 100%, Positives = 100%)

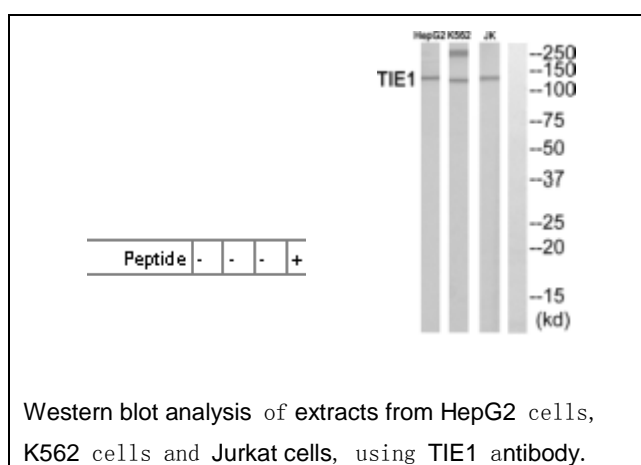
**Applications:** WB: 1:500~1:1000 ELISA: 1:10000

**References:**

Partanen J., Mol. Cell. Biol. 12:1698-1707(1992).

Partanen J.M., Submitted (JUL-1993) to the EMBL/GenBank/DDBJ databases.

Zhang Z., Protein Sci. 13:2819-2824(2004).



**For Research Use Only**

b

**For Research Use Only**