



PTPN22 Antibody

E11-19336C**Catalog Number:** E11-19336C**Concentration:** 1mg/ml**Swiss-Prot No.:** Q9Y2R2

Other Names: Hematopoietic cell protein-tyrosine phosphatase 70Z-PEP; Lymphoid phosphatase; lymphoid-specific protein tyrosine phosphatase; LyP; LYP1; LYP2; PEP; PEST-domain phosphatase; protein tyrosine phosphatase, non-receptor type 22 (lymphoid); protein tyrosine phosphatase, non-receptor type 8; PTN22; PTPN22; PTPN8; Tyrosine-protein phosphatase non-receptor type 22

Storage/Stability: Store at -20 °C/1 year

Form of Antibody: Rabbit IgG in phosphate buffered saline (without Mg^{2+} and Ca^{2+}), pH 7.4, 150mM NaCl, 0.02% sodium azide and 50% glycerol.

Immunogen: The antiserum was produced against synthesized peptide derived from Internal of human PTPN22.

Purification: The antibody was affinity-purified from rabbit antiserum by affinity-chromatography using epitope-specific immunogen.

Specificity: PTPN22 antibody detects endogenous levels of total PTPN22 protein.

Reactivity: Human; Mouse; Rat

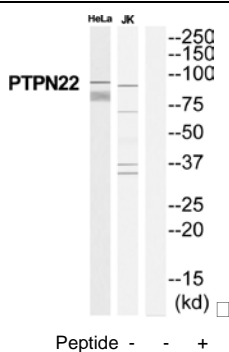
Applications: WB: 1:500~1:3000 ELISA: 1:10000

References:

Cohen S., Blood 93:2013-2024(1999).

Liu T., Submitted (JUL-1998) to the EMBL/GenBank/DDBJ databases.

Wang S., Submitted (JAN-2010) to the EMBL/GenBank/DDBJ databases.



Western blot analysis of extracts from HeLa/Jurkat cells, using PTPN22 antibody.

For Research Use Only