



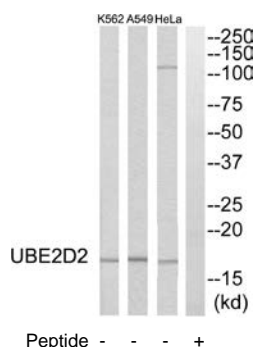
## UBE2D2 Antibody

**E11-19428C****Catalog Number:** E11-19428C**Concentration:** 1mg/ml**Swiss-Prot No.:** P62837**Other Names:** Ubiquitin-conjugating enzyme E2 D2; Ubiquitin carrier protein D2; Ubiquitin-conjugating enzyme E2(17)KB 2; Ubiquitin-conjugating enzyme E2-17 kDa 2; Ubiquitin-protein ligase D2 ;UBE2D2 ;UBC4; UBC5B; UBCH4; UBCH5B**Storage/Stability:** Store at -20 °C/1 year**Form of Antibody:** Rabbit IgG in phosphate buffered saline (without Mg<sup>2+</sup> and Ca<sup>2+</sup>), pH 7.4, 150mM NaCl, 0.02% sodium azide and 50% glycerol.**Immunogen:** The antiserum was produced against synthesized peptide derived from C-terminal of human UBE2D2.**Purification:** The antibody was affinity-purified from rabbit antiserum by affinity-chromatography using epitope-specific immunogen.**Specificity:** UBE2D2 antibody detects endogenous levels of total UBE2D2 protein.**Reactivity:** Human (Identities = 100%, Positives = 100%);  
Mouse (Identities = 100%, Positives = 100%);  
Rat (Identities = 100%, Positives = 100%)**Applications:** WB: 1:500~1:1000 ELISA: 1:40000**References:**

Jensen J.P., J. Biol. Chem. 270:30408-30414(1995).

Rolfe M., Proc. Natl. Acad. Sci. U.S.A. 92:3264-3268(1995).

Guinn B.-A., Biochem. Biophys. Res. Commun. 335:1293-1304(2005).

**For Research Use Only**