



VPS26B Antibody

E11-19486C**Catalog Number:** E11-19486C**Concentration:** 100µl, 1mg/ml**Swiss-Prot No.:** Q4G0F5**Other Names:** vacuolar protein sorting 26B; vesicle protein sorting 26B; VP26B**Storage/Stability:** Store at -20°C/1 year**Form of Antibody:** Rabbit IgG in phosphate buffered saline (without Mg^{2+} and Ca^{2+}), pH 7.4, 150mM NaCl, 0.02% sodium azide and 50% glycerol.**Immunogen:** The antiserum was produced against synthesized peptide derived from internal of human VPS26B.**Purification:** The antibody was affinity-purified from

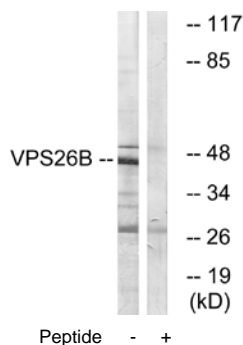
rabbit antiserum by affinity-chromatography using epitope-specific immunogen.

Specificity: VPS26B antibody detects endogenous levels of total VP26B protein.**Reactivity:** Human, Mouse, Rat**Applications:** WB: 1:500~1:3000 ELISA: 1:10000**References:**

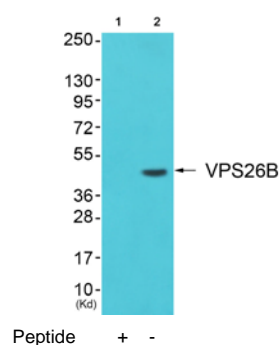
Kim N.-S., Submitted (NOV-2001) to the EMBL/GenBank/DDBJ databases.

The MGC Project Team; Genome Res. 14:2121-2127(2004).

Matsuoka S., Science 316:1160-1166(2007).



Western blot analysis of extracts from LOVO cells, using VPS26B antibody.



Western blot analysis of extracts from JK cells, using VPS26B antibody.

For Research Use Only